

WALK

Wellness and Lifetime Knowledge



Progress Report

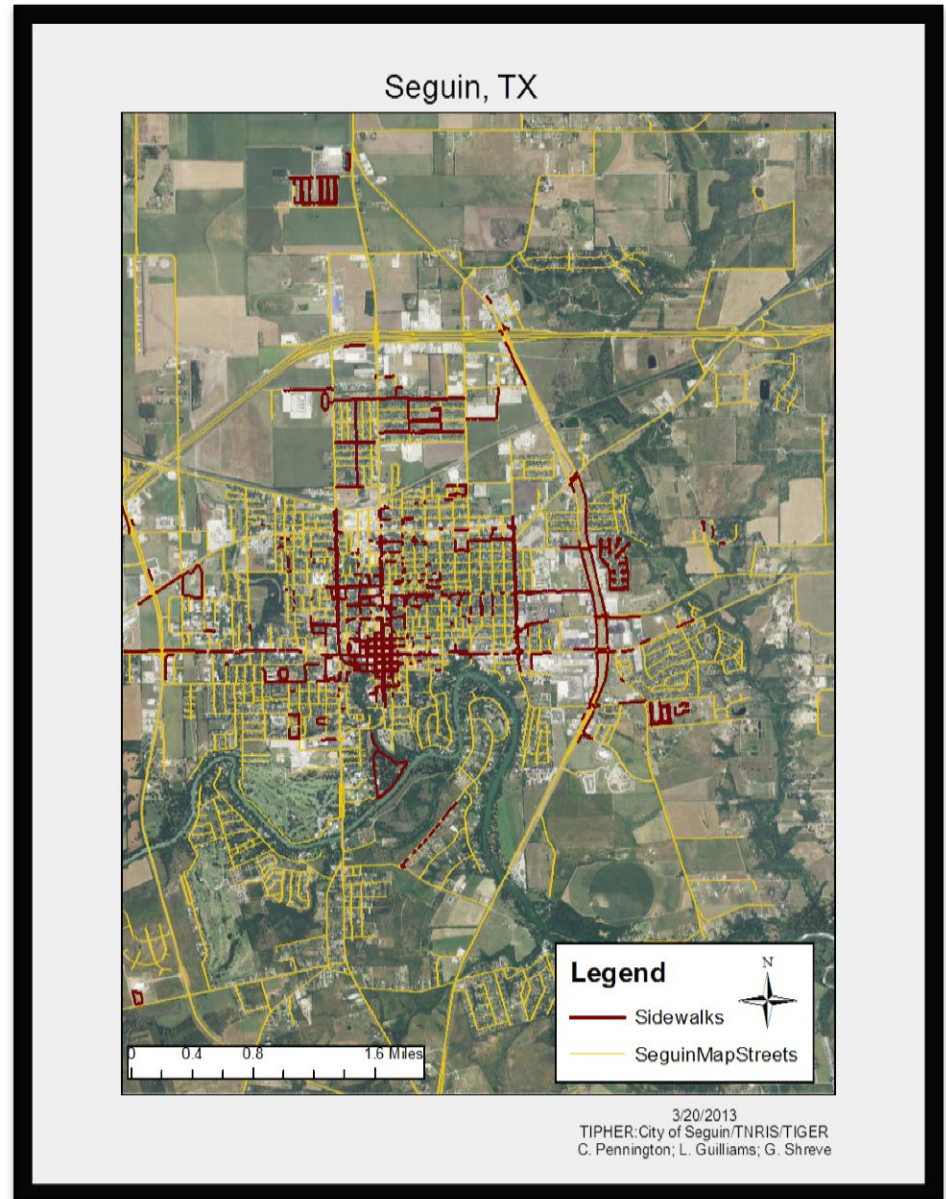
Catie Pennington

Geoff Shreve

Les Guilliams

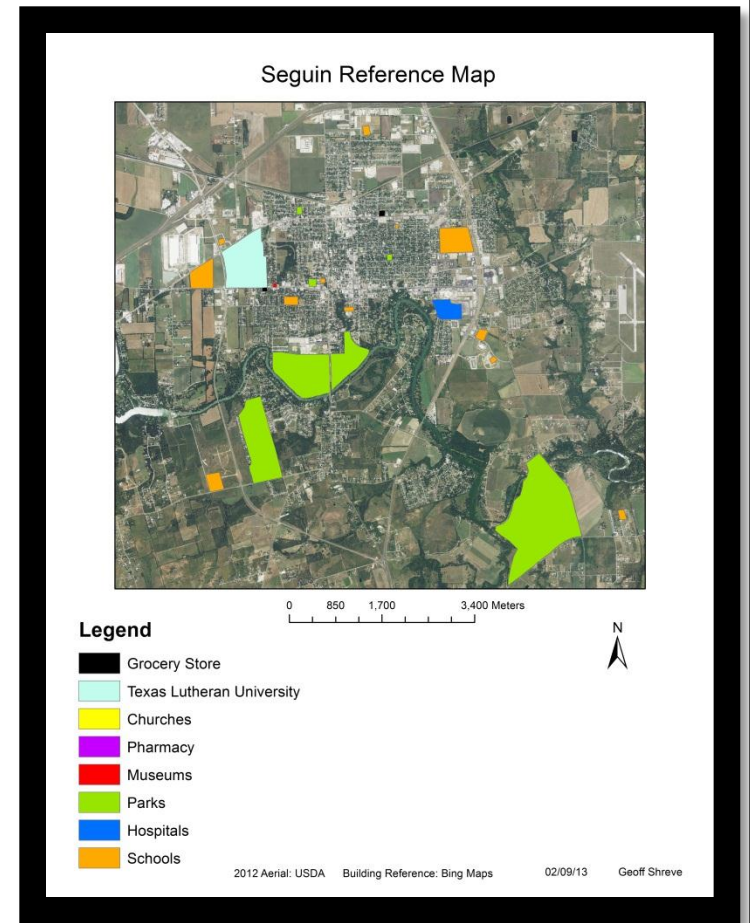
Introduction

- Sidewalk inventory of Seguin for TIPHER
- About 40 miles of sidewalks to cover
- Focus on HDD, schools and then move outward
- Using Google Earth for some field work



Project Description

- Sidewalk Inventory of Seguin, TX
- Creation of a walking map
- Sidewalk connectivity to Pedestrian Attractors
- Using a spreadsheet to organize data



Progress

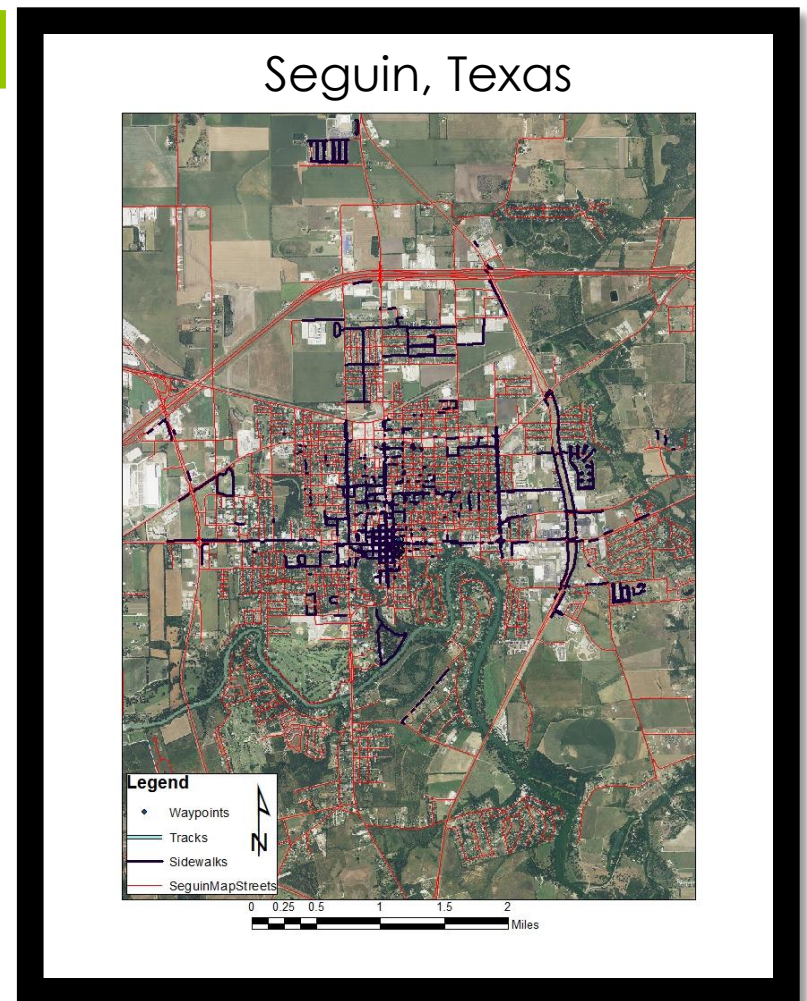
Location	Distance from curb	Obstructions	Width	ADA	Length	Material
E. Court (north) at N. Crockett (east)	4 feet		4-5 feet	2 ramps (pt 1)	whole segment	concrete
E. Court (south) at N. Crockett (west)	0 feet	drive way (pt 3)	4-5 feet	ramp (pt 2)	half of segment	concrete
E. Court (north) at N. Crockett (west)	0 feet	pot hole (pt 4)	8-10 feet	ramp at Court and River (pt 7)	whole segment	concrete
E. Court (south) at N. Crockett (east)	0 feet		8-10 feet	ramps at Court and River	whole segment	concrete
River between Gonzales and Court	0 feet		8-10 feet	ramp on court and river (pts 11, 12)	whole segment	concrete and pea gravel
Court (south) and River (west)	0 feet		8-10 feet	ramp at River (west) and Donegan (north (pts 13, 16)	whole segment	concrete
Court between River and 123	0 feet	2 fire hydrants, 2 light poles, 2 street signs	8-10 feet	ramps at both ends	whole segment	concrete
River (west) between Donegan and Nolte	5 feet (brick)			ramp at River (west) and Donegan (south)	whole segment	concrete
River (west) and Donegan (south)	5 feet (brick)		5 feet	ramp at River (west) and (north) Nolte (pt 14)	whole segment	concrete

Progress

- Time periods
 - Other sources of data:
 - Chamber of Commerce
 - 2/24-3/30: Data Collection
 - 3/10-3/30: Pre-processing Data
 - 3/30-4/13: Data Analysis
 - 4/13-4/20: Data Interpretation
- | |
|-------------|
| Completed |
| In Progress |
| In Progress |
| Next Period |
| Next Period |

Previous Period

- Chambers of Commerce PDF import into a usable data set
- Field work and Input



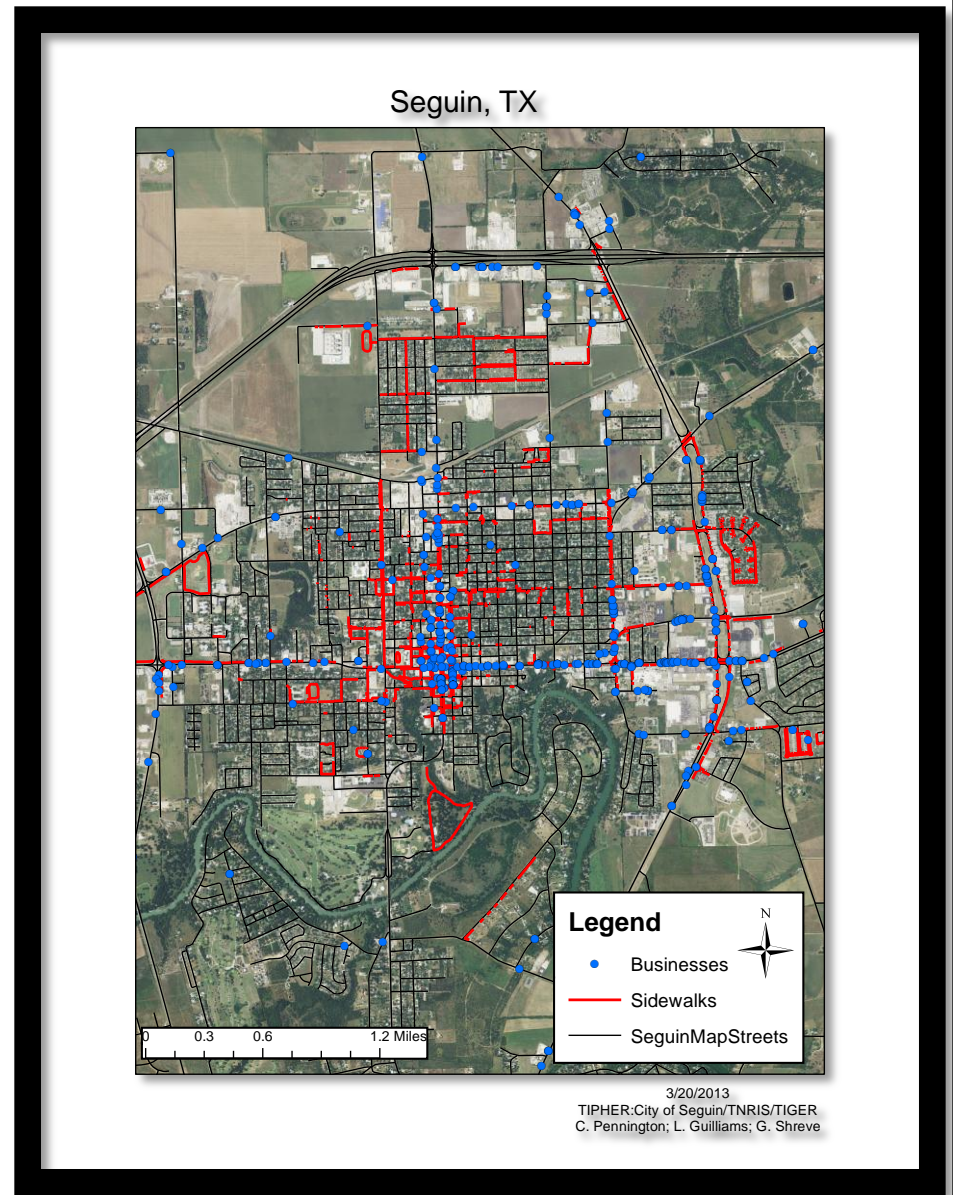
Current Period

- Field work
- Input



Next Period

- Data Analysis
 - Show connectivity
 - Form routes
- Data Interpretation
 - Make recommendations to build/repair



Problems

- Finding/accessing other data sources
- Field work is time consuming



Conclusion

- Main focus is on the HDD area of Seguin
- Highest concentration of well-maintained sidewalks
- Most sidewalks here are 5 feet in width
- WALK will focus on HDD and work outward
- Safe Route to School program- schools and parks will also be given priority



Questions?