

Low Intensity Residential Map for Regions 11,12, and 13

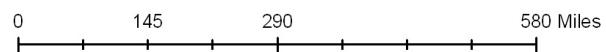


Low Intensity Residential

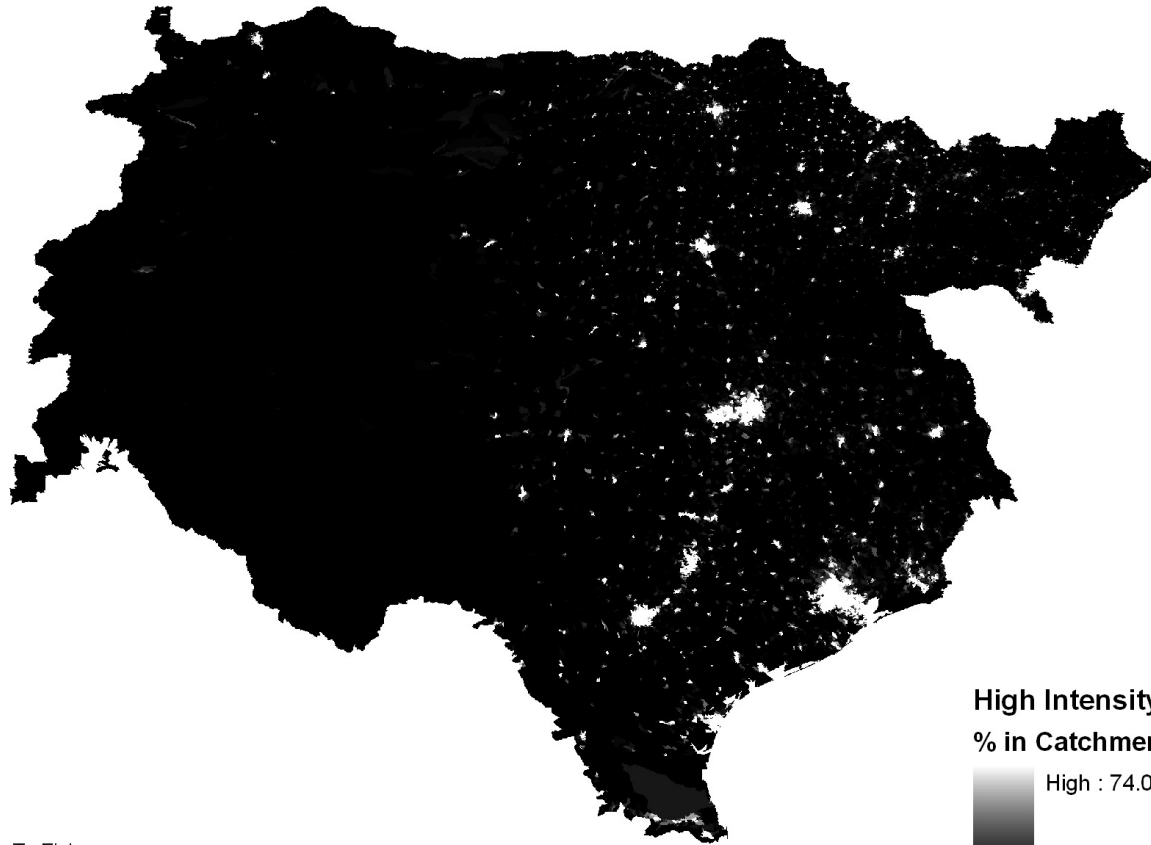
% in Catchment



Produced by: Tx Fish
May 3, 2010



High Intensity Residential Map for Regions 11,12, and 13



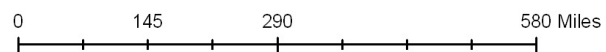
High Intensity Residential

% in Catchment

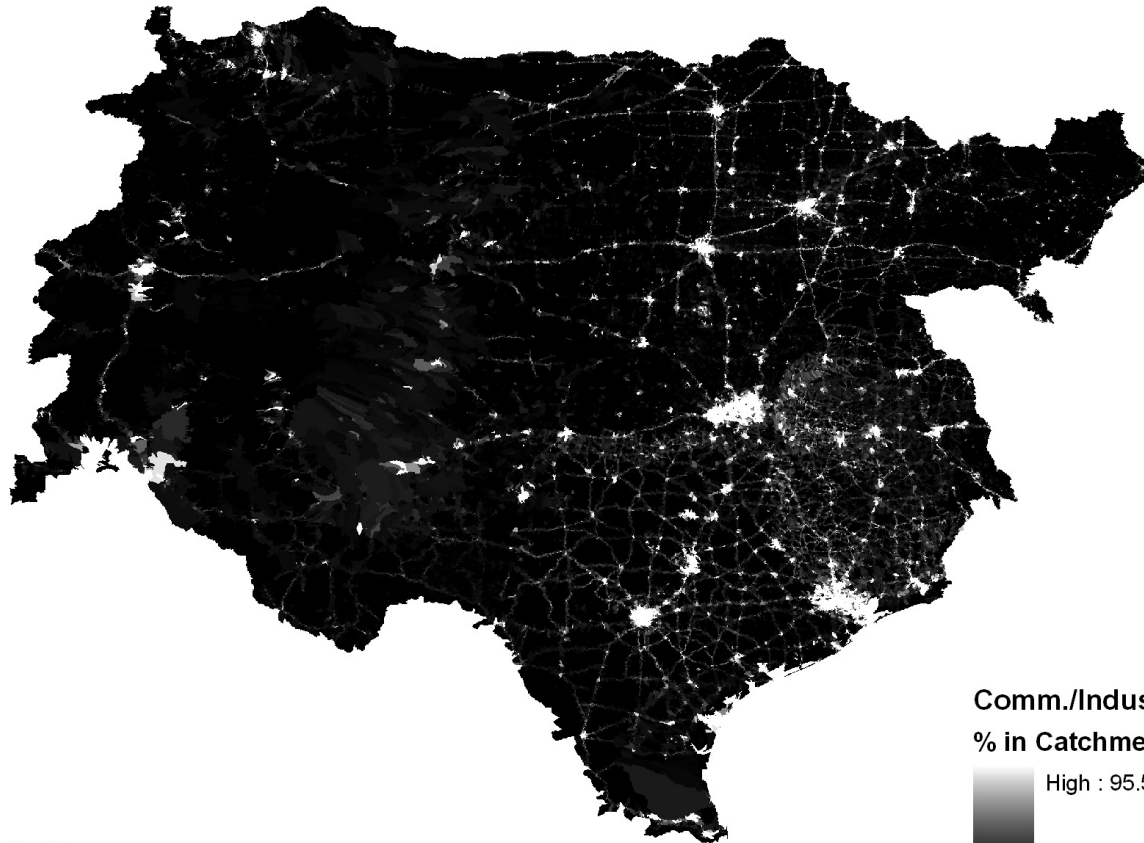
High : 74.0298

Low : 0

Produced by: Tx Fish
May 3, 2010



Commercial/Industrial/Transportation Map for Regions 11,12, and 13



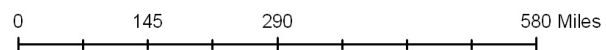
Comm./Indus./Transp.

% in Catchment

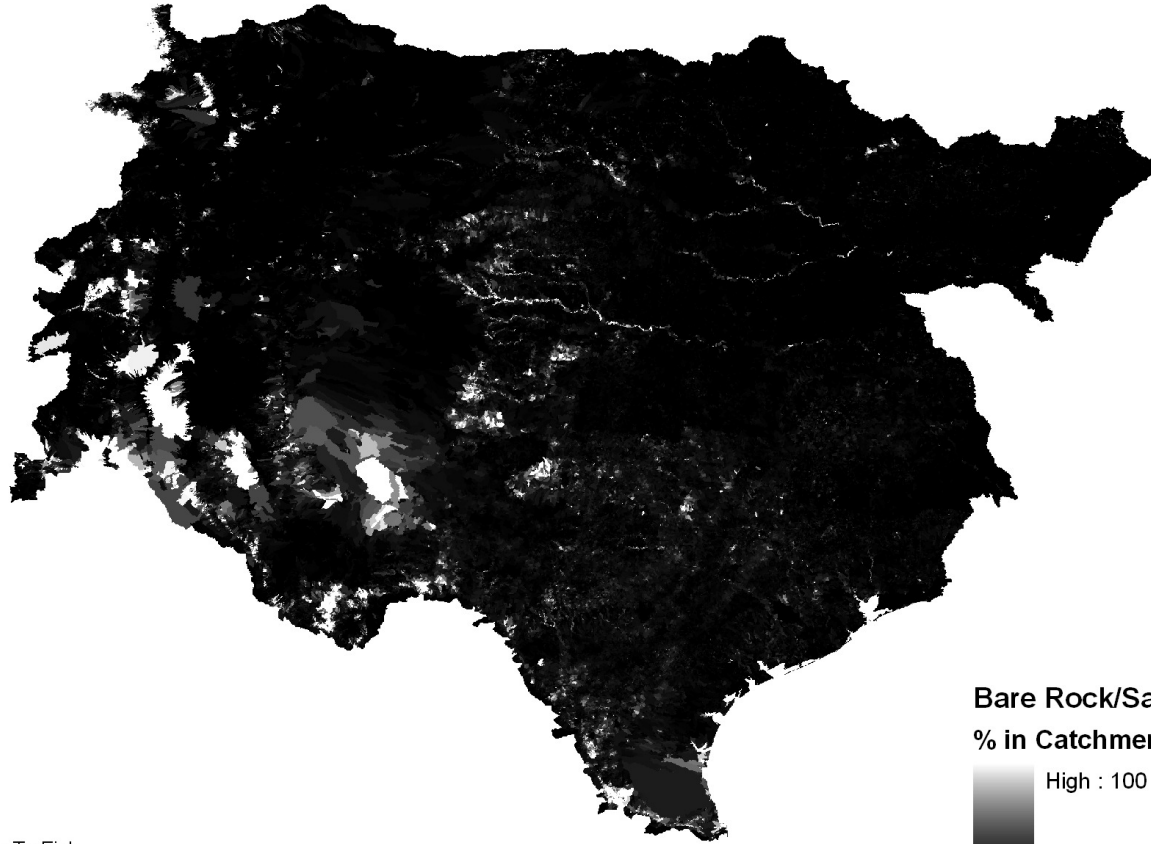
High : 95.5128

Low : 0

Produced by: Tx Fish
May 3, 2010



Bare Rock/Sand/Clay Map for Regions 11,12, and 13

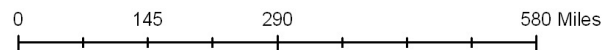


Bare Rock/Sand/Clay

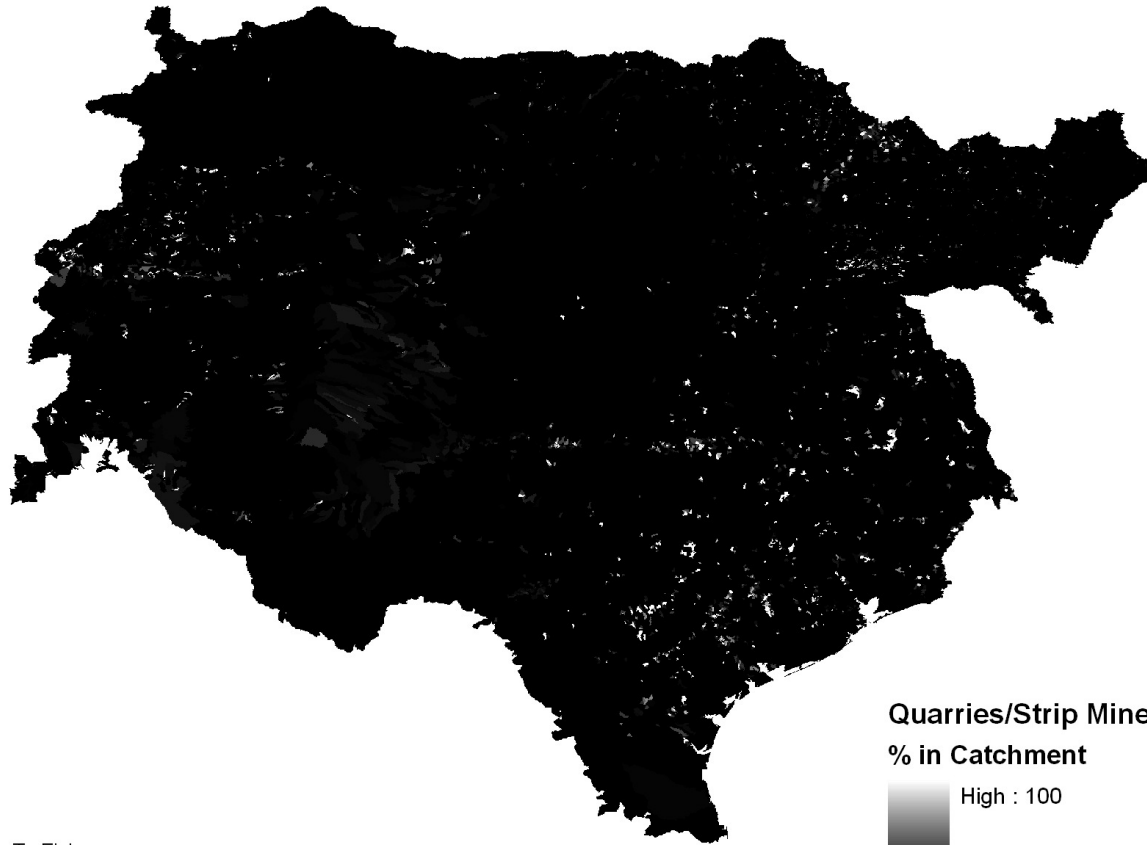
% in Catchment



Produced by: Tx Fish
May 3, 2010



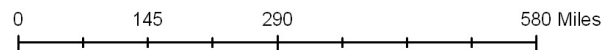
Quarries/Strip Mines/ Gravel Pits Map for Regions 11,12, and 13



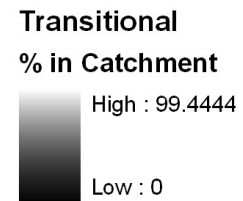
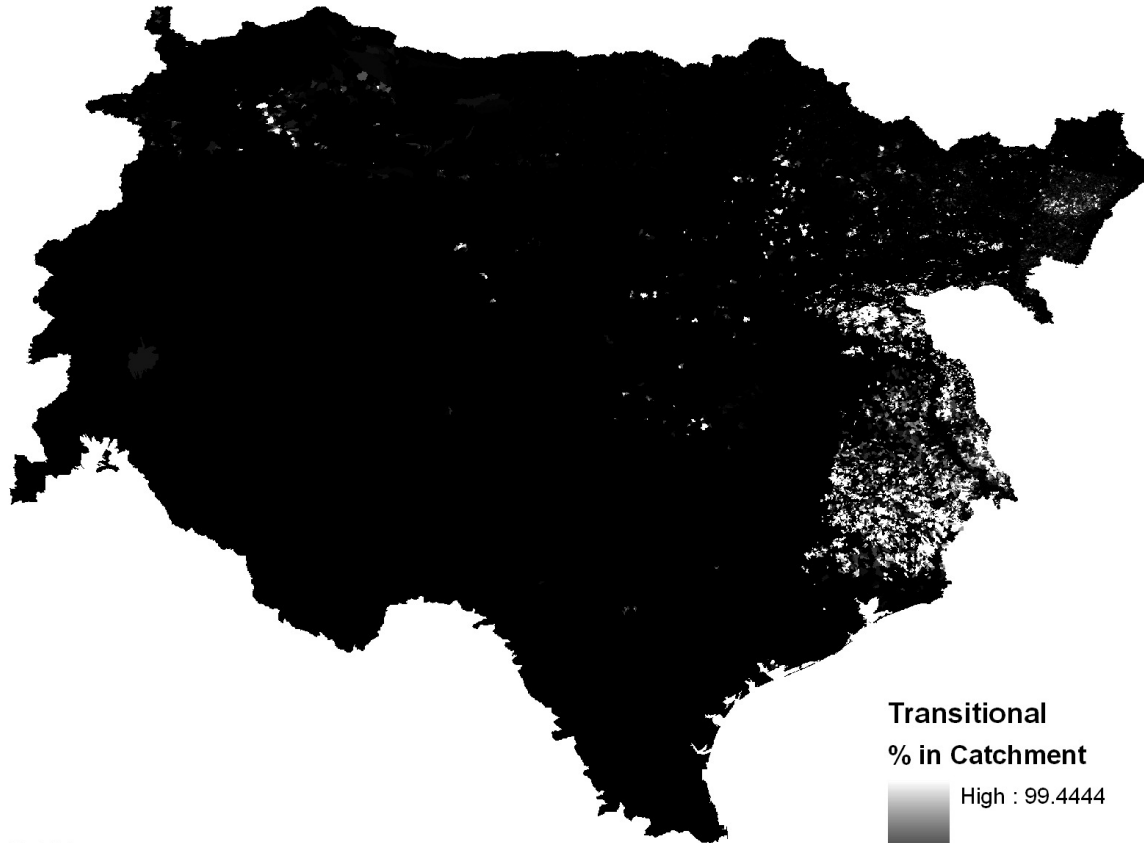
Quarries/Strip Mines/Gravel Pits
% in Catchment



Produced by: Tx Fish
May 3, 2010



Transitional Map for Regions 11,12, and 13



Produced by: Tx Fish
May 3, 2010

