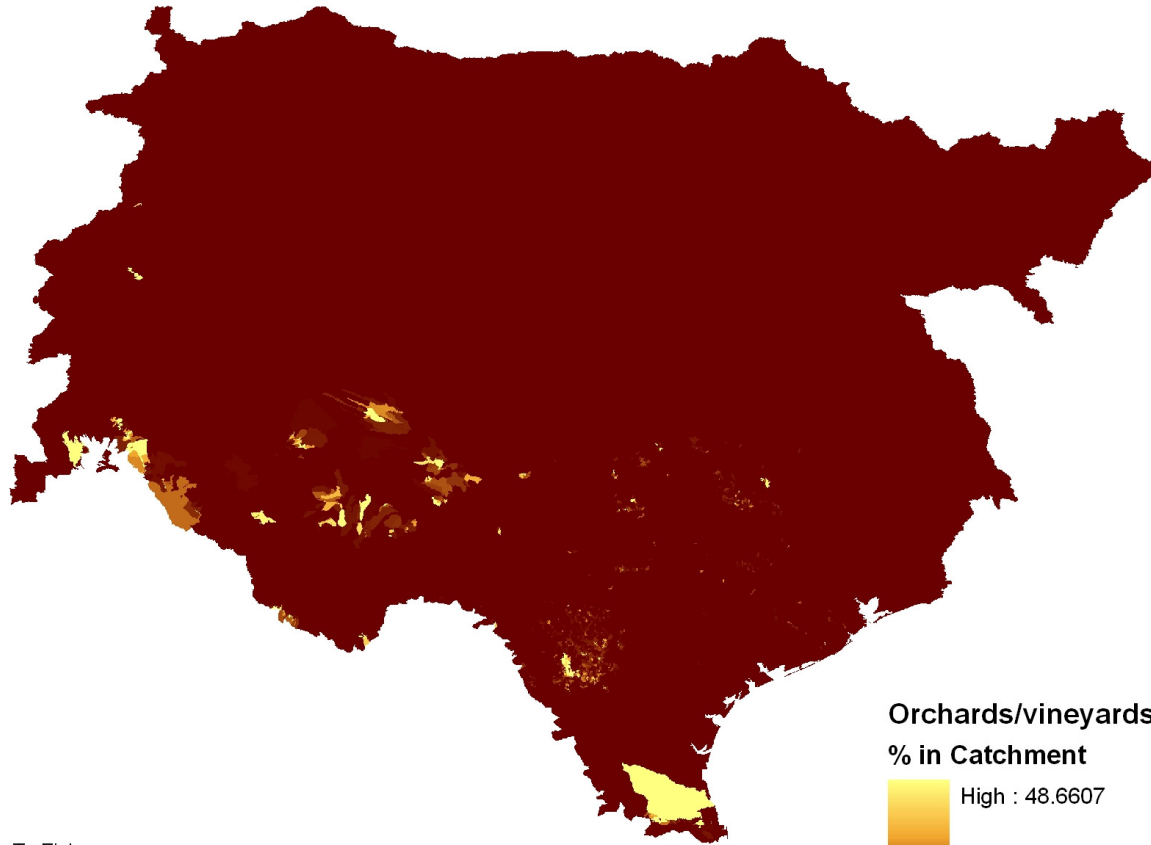
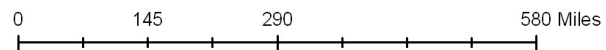


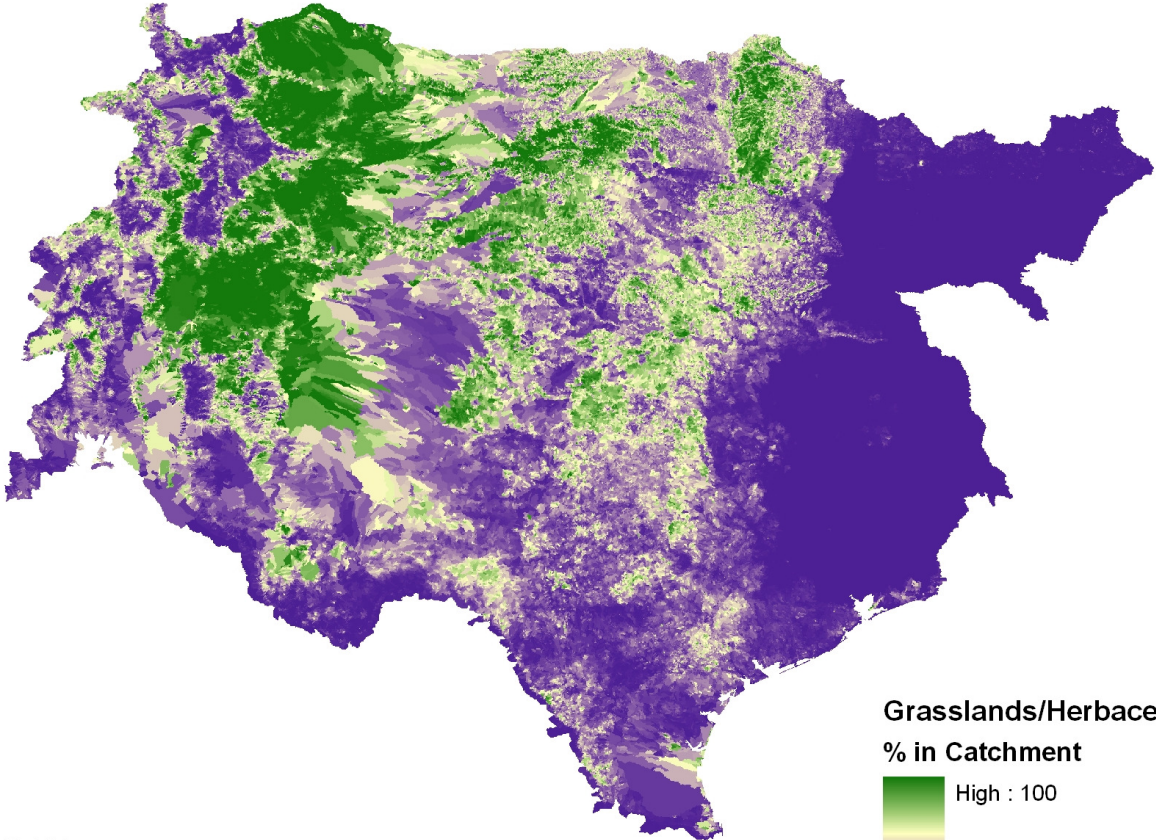
# Orchards/Vineyards Map for Regions 11,12, and 13



Produced by: Tx Fish  
May 3, 2010

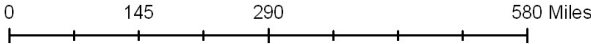


# Grasslands/Herbaceous Map for Regions 11,12, and 13

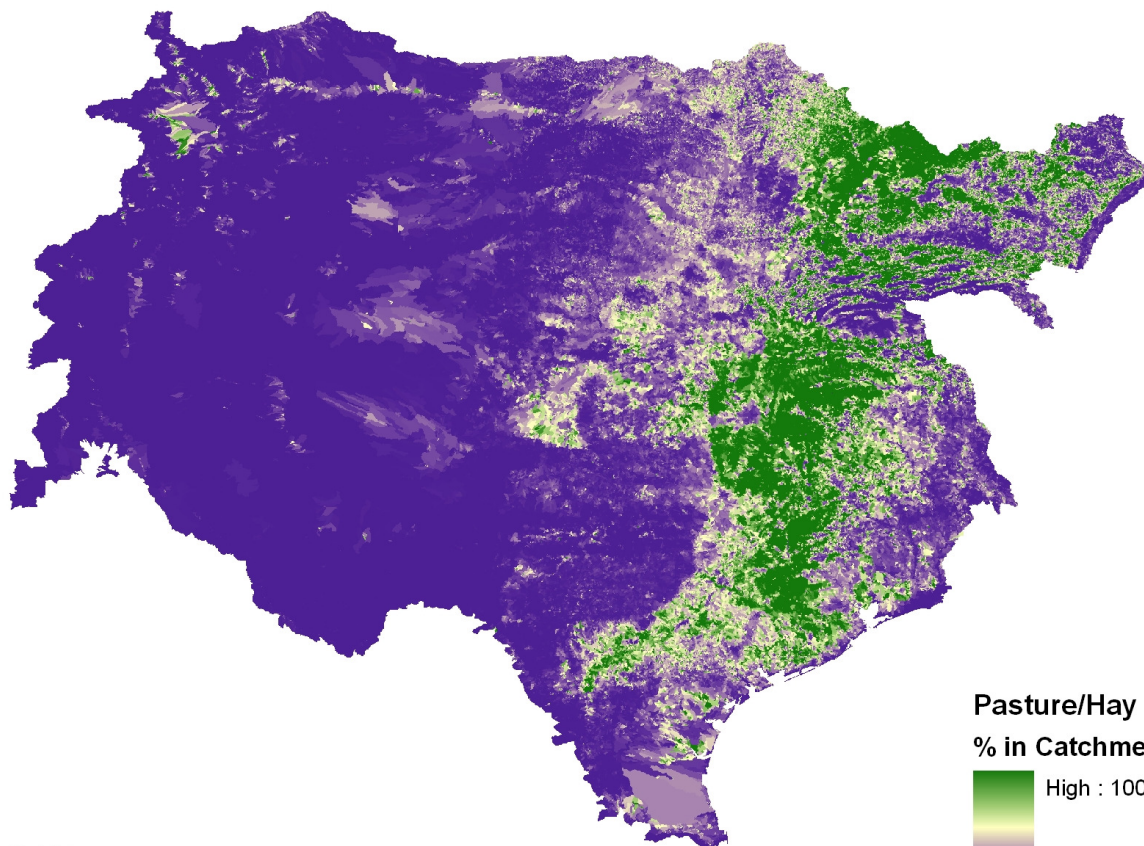


**Grasslands/Herbaceous  
% in Catchment**  
High : 100  
Low : 0

Produced by: Tx Fish  
May 3, 2010

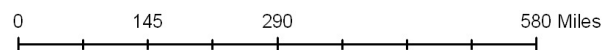


# Pasture/Hay Map for Regions 11,12, and 13

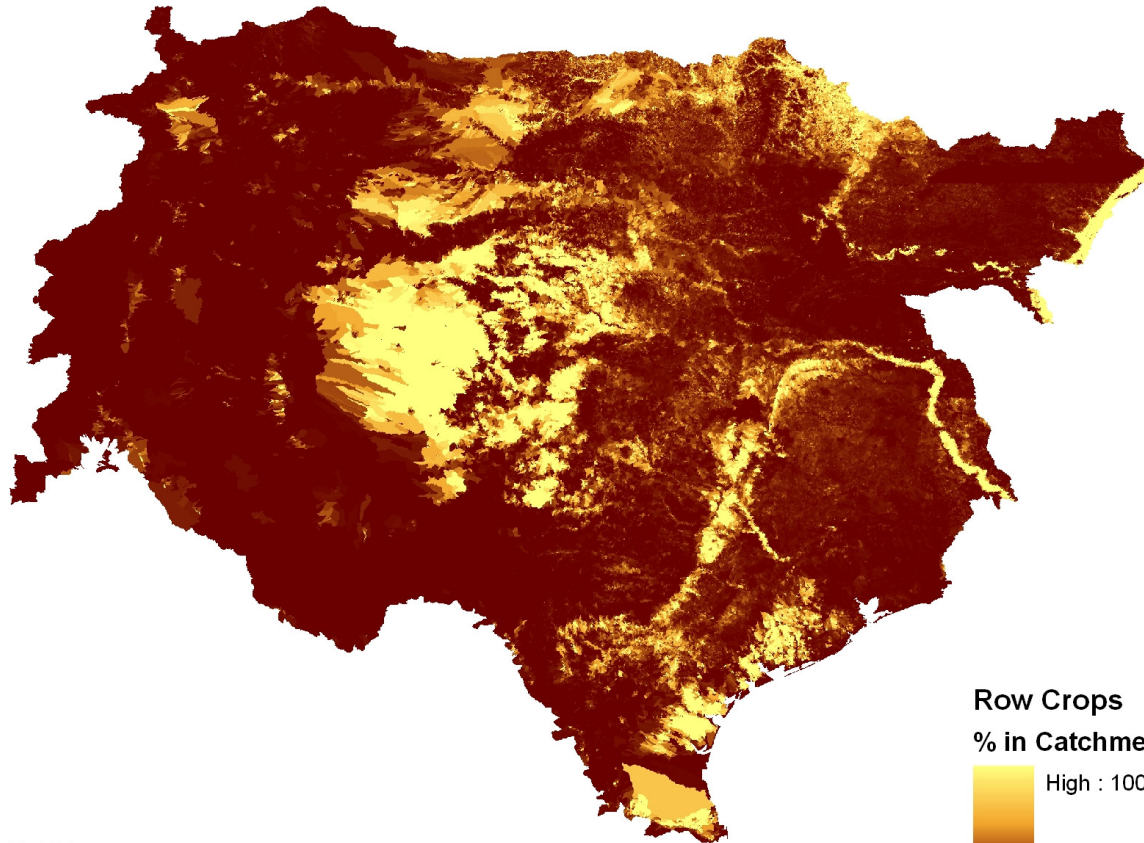


**Pasture/Hay**  
**% in Catchment**  
High : 100  
Low : 0

Produced by: Tx Fish  
May 3, 2010

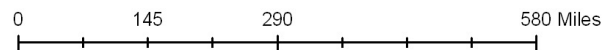


# Row Crops Map for Regions 11,12, and 13



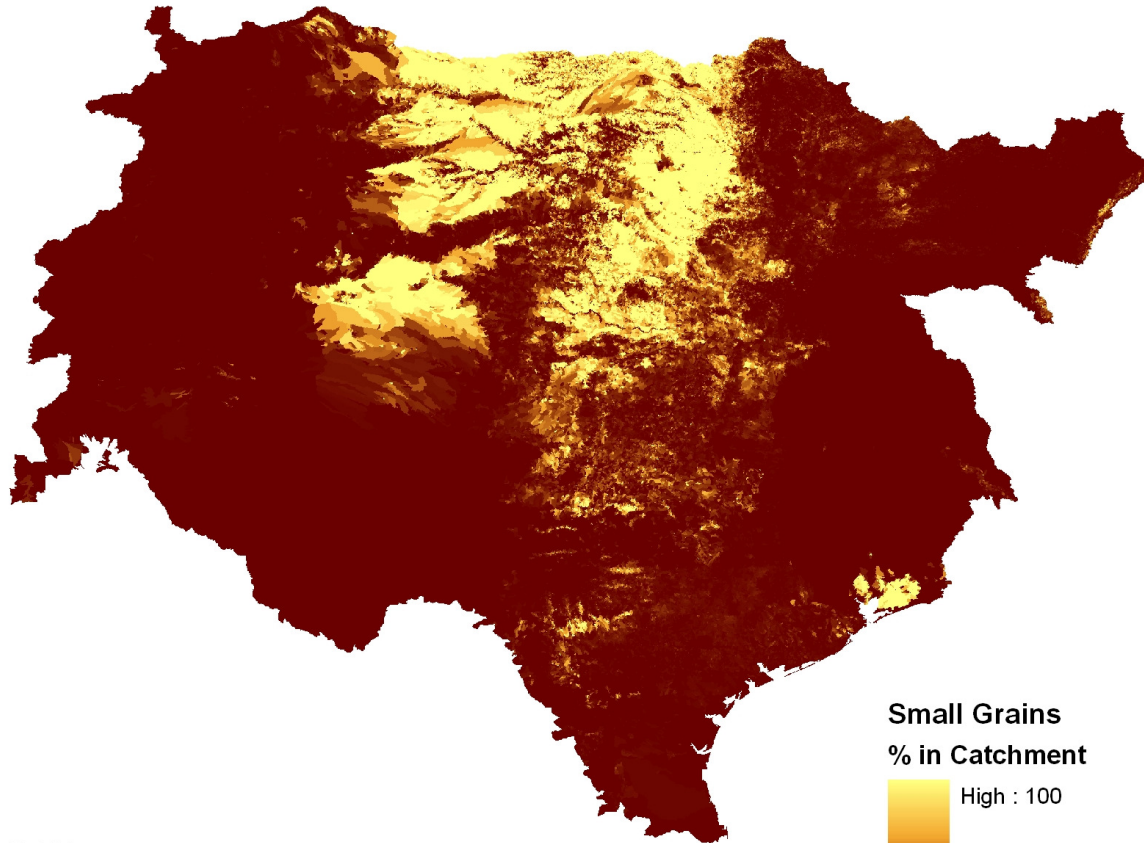
**Row Crops**  
**% in Catchment**  
High : 100  
Low : 0

Produced by: Tx Fish  
May 3, 2010







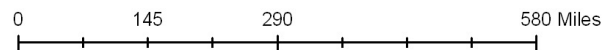
# Small Grains Map for Regions 11,12, and 13



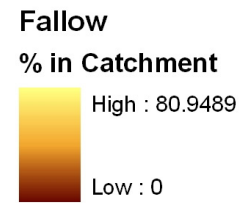
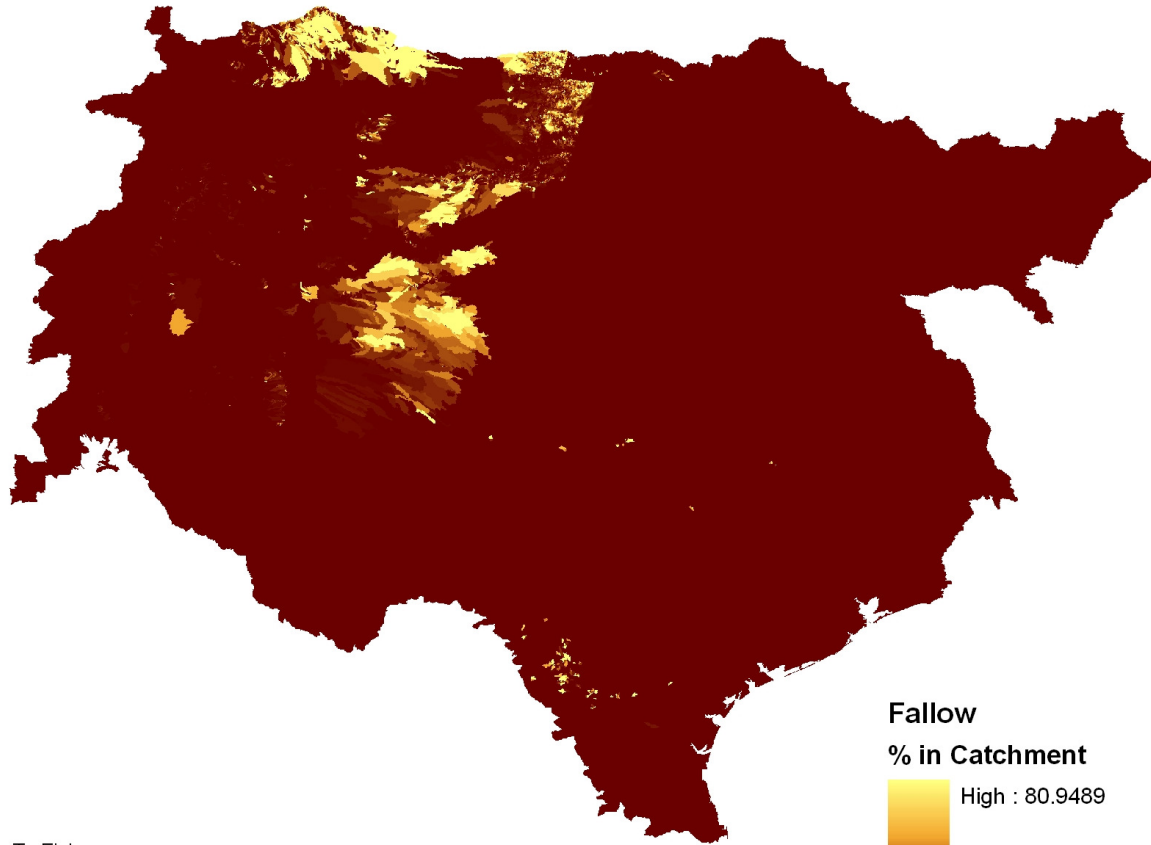
**Small Grains**  
**% in Catchment**

	High : 100
	Low : 0

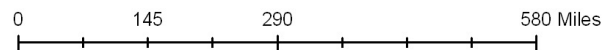
Produced by: Tx Fish  
May 3, 2010



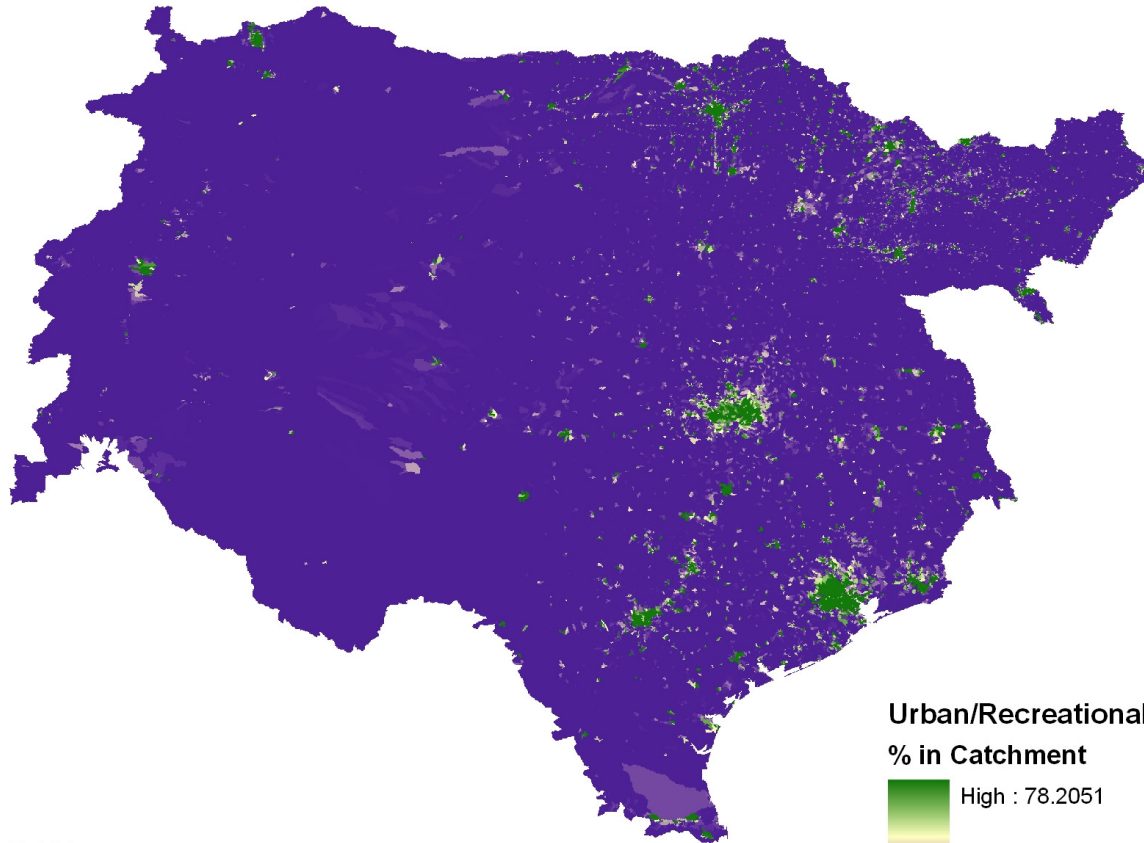
# Fallow Map for Regions 11,12, and 13



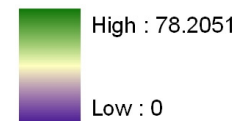
Produced by: Tx Fish  
May 3, 2010



# Urban Recreational Grasses Map for Regions 11,12, and 13



Urban/Recreational Grasses  
% in Catchment



Produced by: Tx Fish  
May 3, 2010

