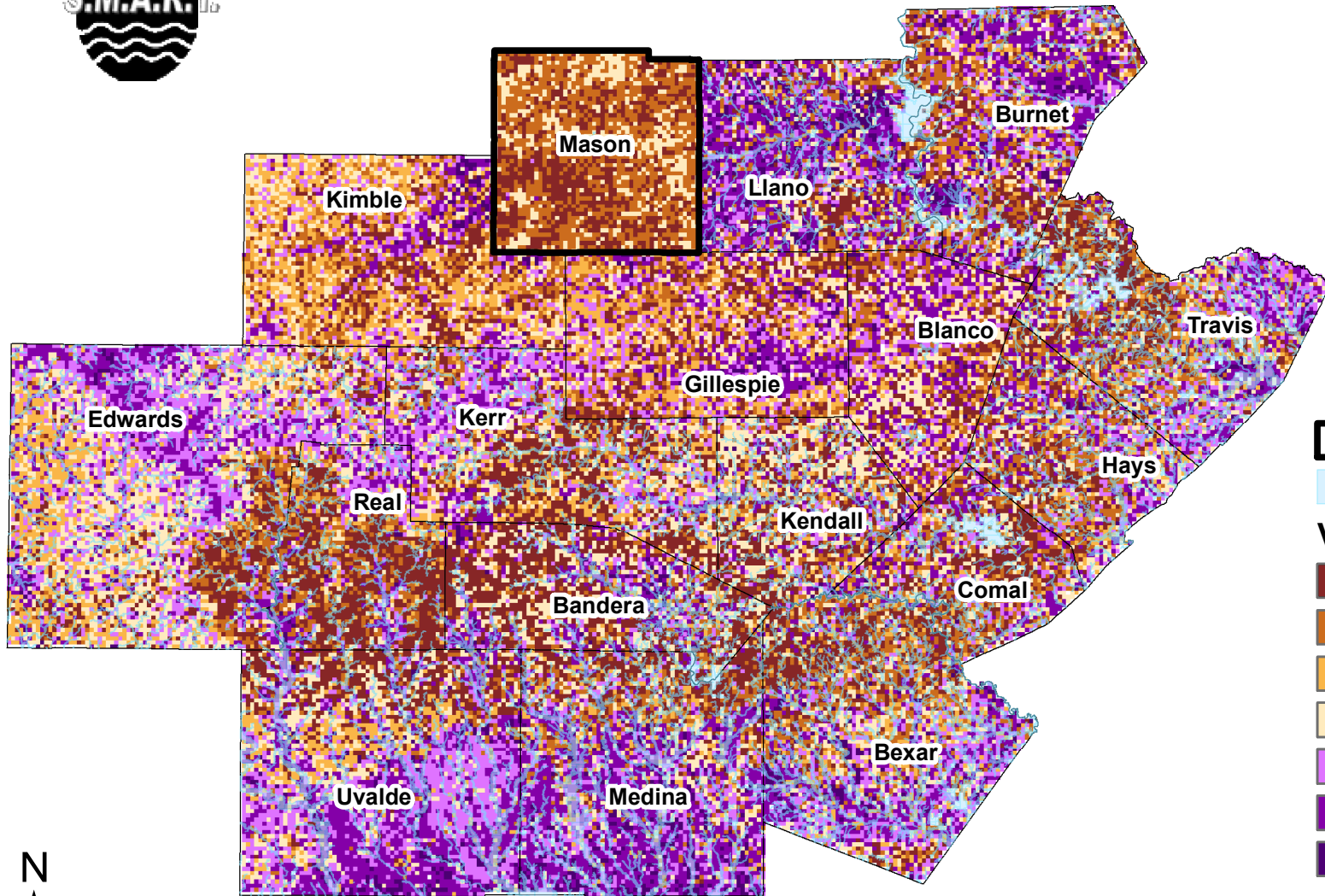


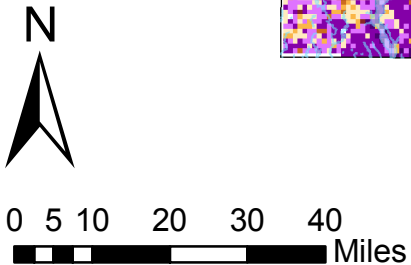
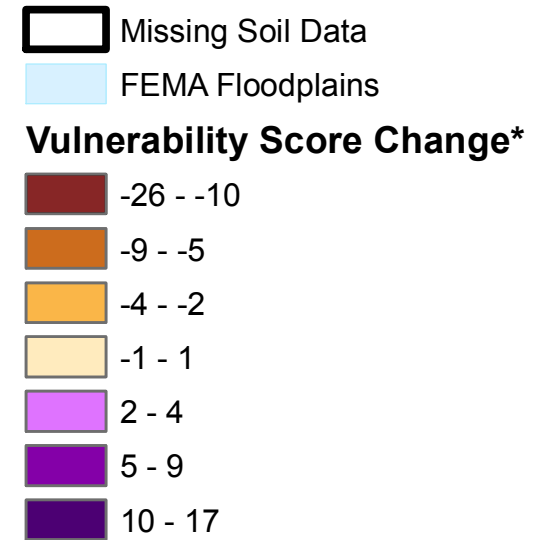
Groundwater Vulnerability Weighted v.s. Equal Weighted



Criteria for scoring vulnerability:

- Soil Thickness *
- Soil KSAT *
- Cave Density
- Slope
- Vegetation

* Mason County is missing all soil data, and therefore the vulnerability only scores are based only on cave density, slope, and vegetation.



* These comparisons were done by using an algorithm, which subtracted the weighted vulnerability score from the equal weighted score. The results indicate where there was a change in vulnerability score. The negative numbers indicate an area where adding weights to the equation decreased the score, and the positive numbers indicate an area where adding weights increased the score.