

Groundwater Vulnerability

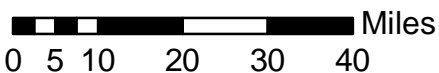
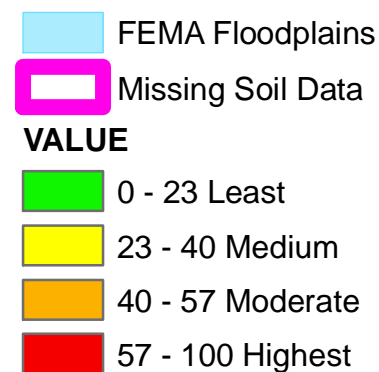
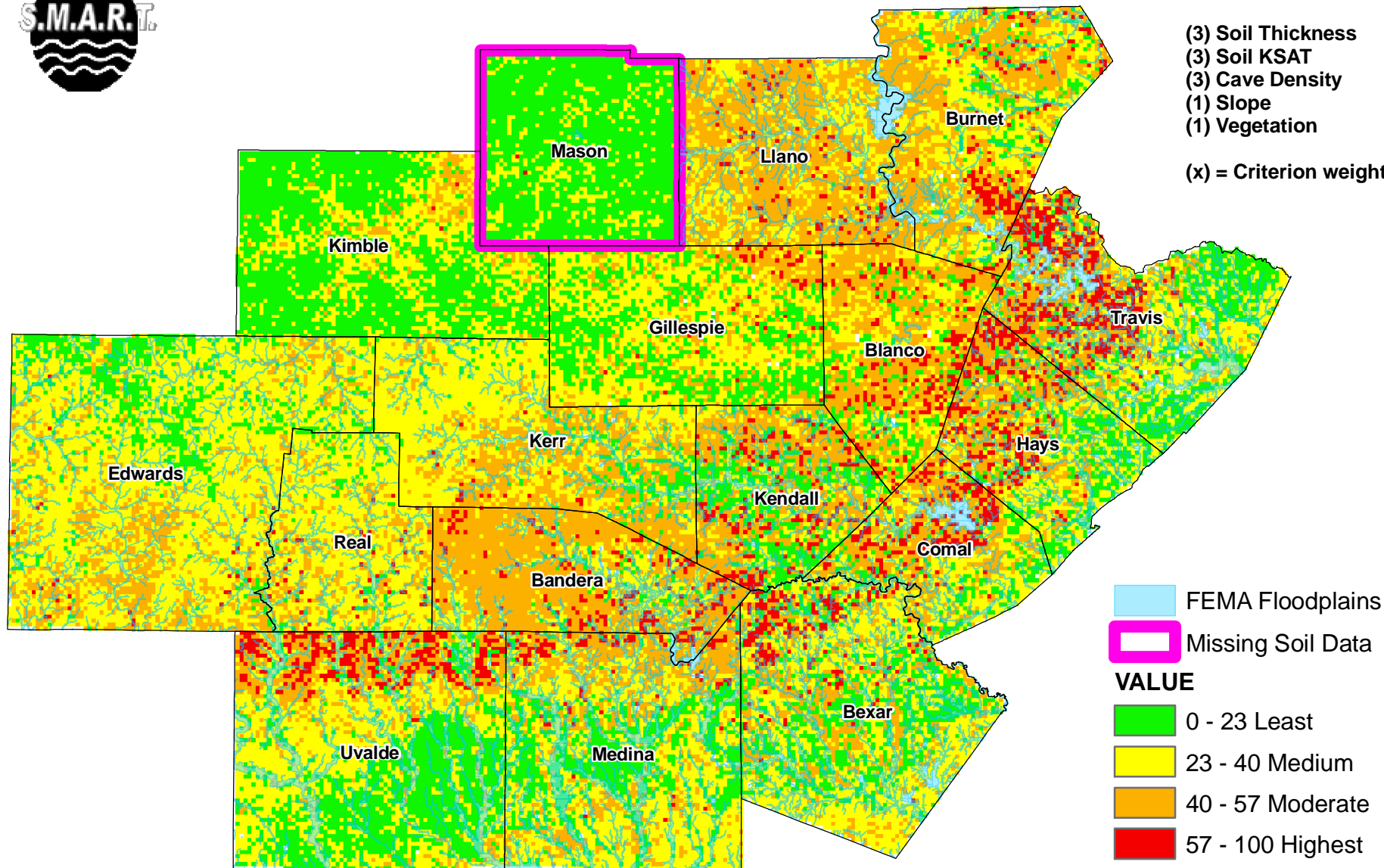
Weighted Model



Criteria for scoring vulnerability:

- (3) Soil Thickness
- (3) Soil KSAT
- (3) Cave Density
- (1) Slope
- (1) Vegetation

(x) = Criterion weight *



NAD 1983 UTM Zone 14N
Created: 4/21/09

* A criterion weight indicates how important one data layer is considered relative to other criteria being analyzed. A criterion weight of (3) would indicate that the layer is considered three times as important as other layers when performing the analysis. The weight for each criterion was determined by expert opinion.