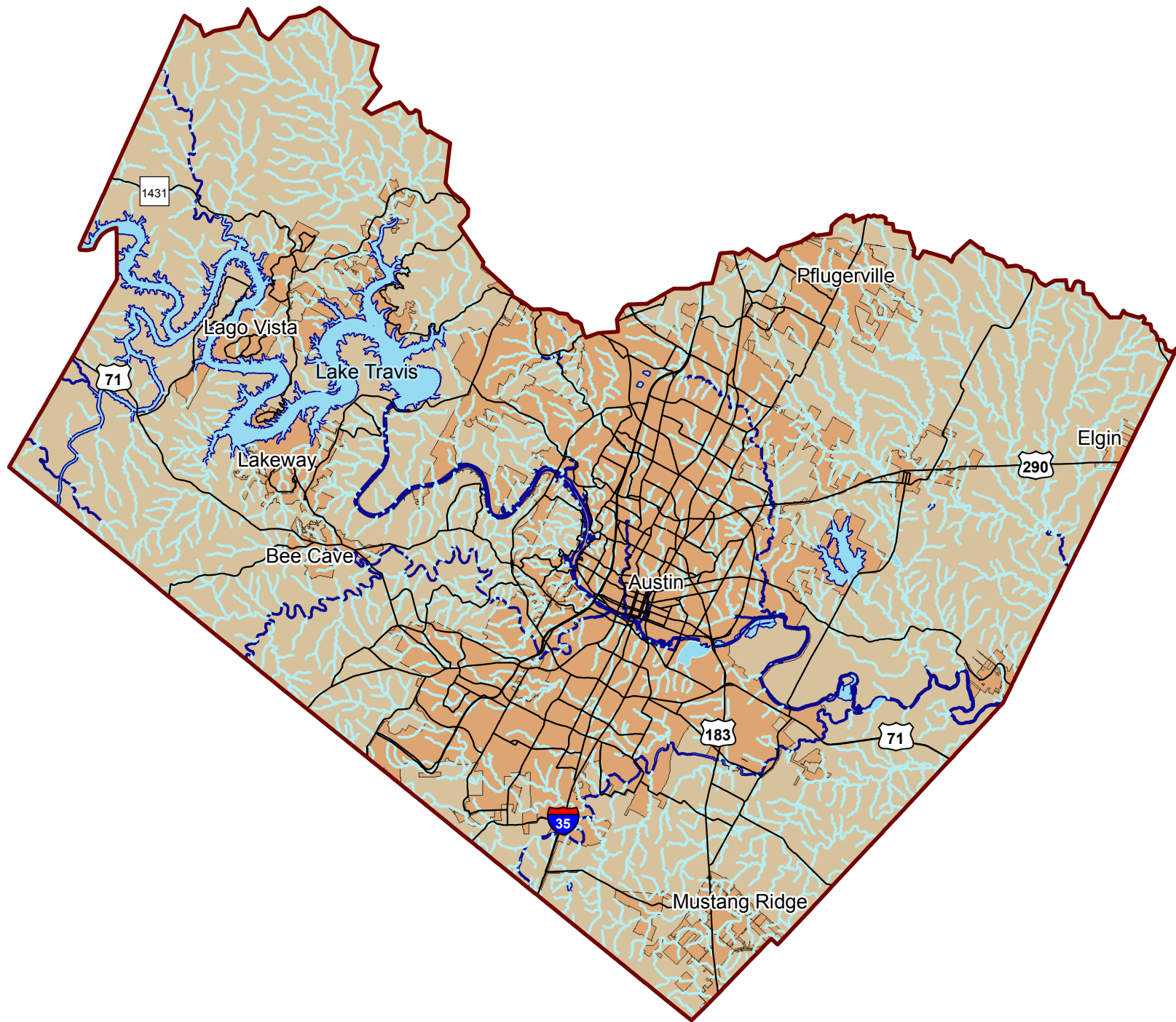


Travis County Buffered Hydrography





Hydrography Type	Acres
Intermittent Stream	1,219,365
Other Hydrography Types:	
Stream Water Body	147,337
Water Body	140,079
Major River	30,651
Major Stream	18,752
Dam	2,527
Intermittent Lake	0
Total	339,346
Travis County	6,556,080

Project Team: PAKK
 GEO 4427 Advanced GIS II - Spring 2009
 April 27, 2009

1:363,149

Miles

 Intermittent Hydrography

 Other Hydrography Types

"Other Hydrography Types" includes:
 Stream Water Body, Major River,
 Major Stream, Water Body, Dam