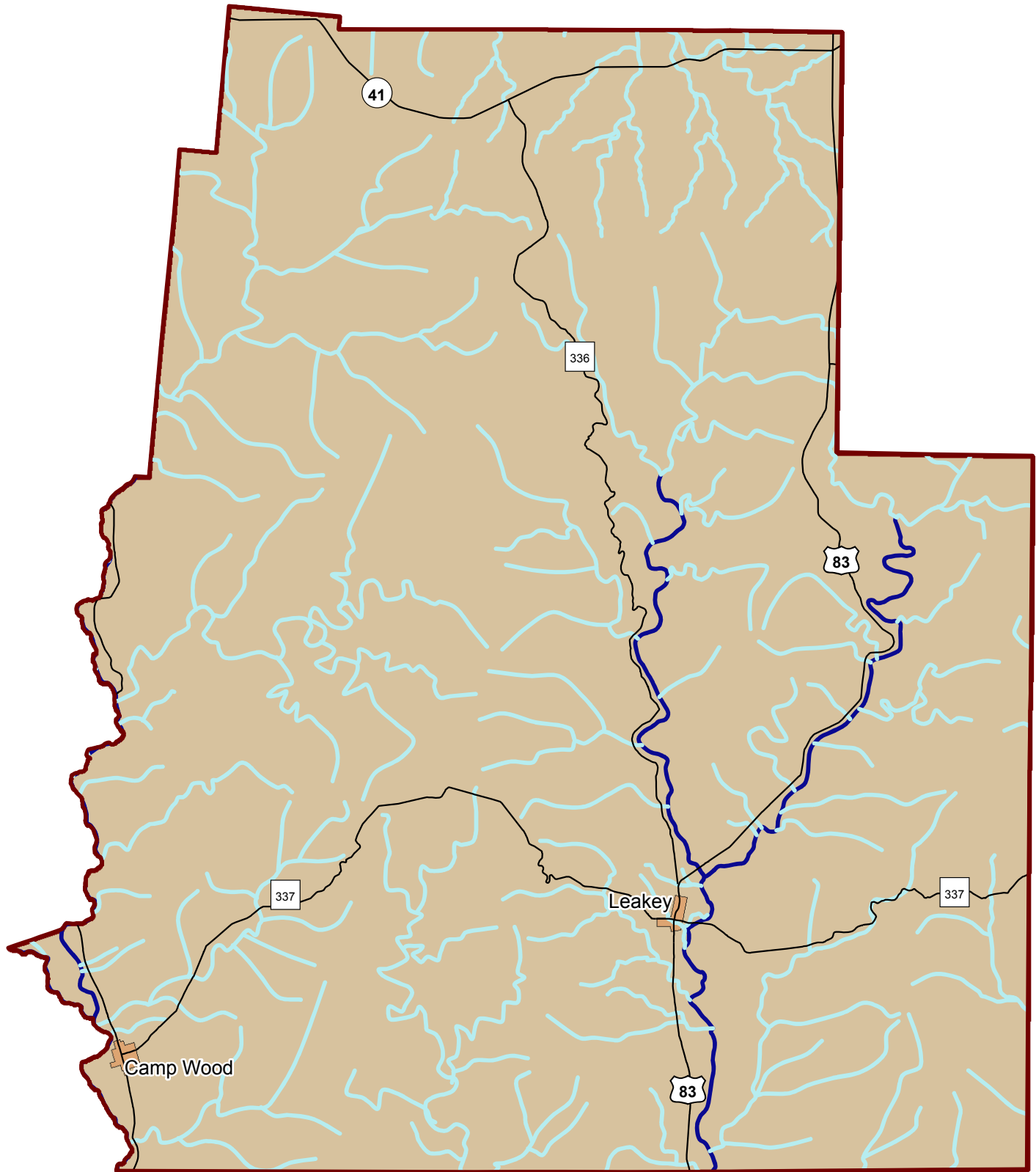


Real County Buffered Hydrography





Hydrography Type	Acres
Intermittent Stream	376,707
Other Hydrography Types:	
Stream Water Body	22,385
Major Stream	21,644
Water Body	0
Dam	0
Intermittent Lake	0
Major River	0
Total	44,029
Real County	4,476,585

Project Team: PAKK
 GEO 4427 Advanced GIS II - Spring 2009
 April 27, 2009

1:242,521



Miles

 Intermittent Hydrography
 Other Hydrography Types

"Other Hydrography Types" includes:
 Stream Water Body, Major River,
 Major Stream, Water Body, Dam