



Team Members

Ms. Katherine Grobe

Project Manager

Ms. Phillicia Phillips

Assistant PM / GIS Analyst

Mr. Amon Clack

GIS / Web GIS Analyst

Mr. Kyle Furtwangler

Webmaster / Analyst

Spatial Analysis of Stream Buffer Setbacks in the Texas Hill Country

Prepared by:

PAKK

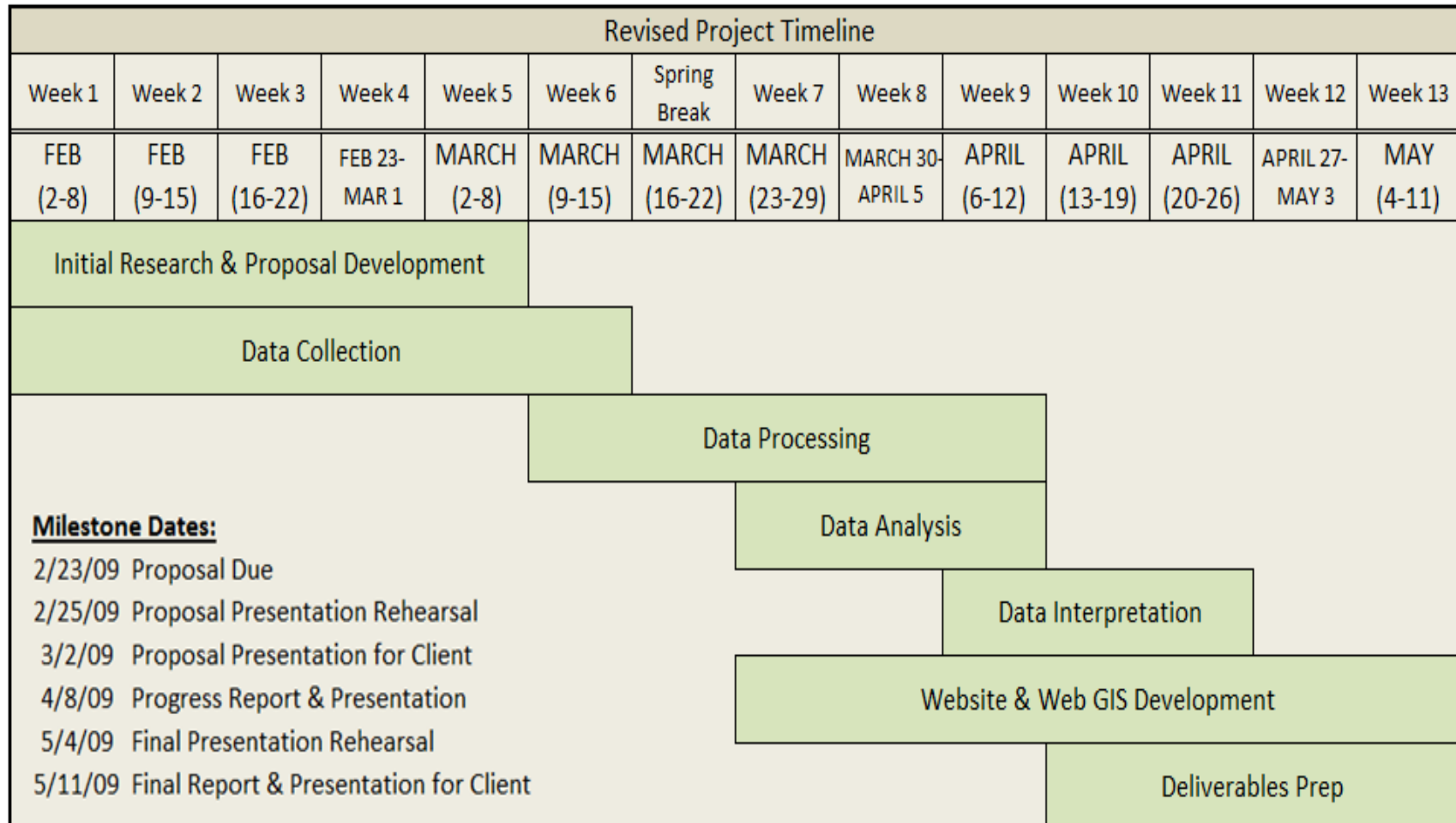
Texas Hill Country

GIS Specialists

Project Overview

- Illustrate & measure land area affected by stream buffer guidelines expressed in RWQPP
 - 300 ft. each side of centerline applied in relation to contributing area of greater than 640 acres
 - Overview map per county (17)
 - Interactive web GIS maps (6 counties)
- Scope
 - 17 county area of the Texas Hill Country
 - web GIS maps - 6 counties: Hays, Comal, Blanco, Kendall, Bandera, & Medina

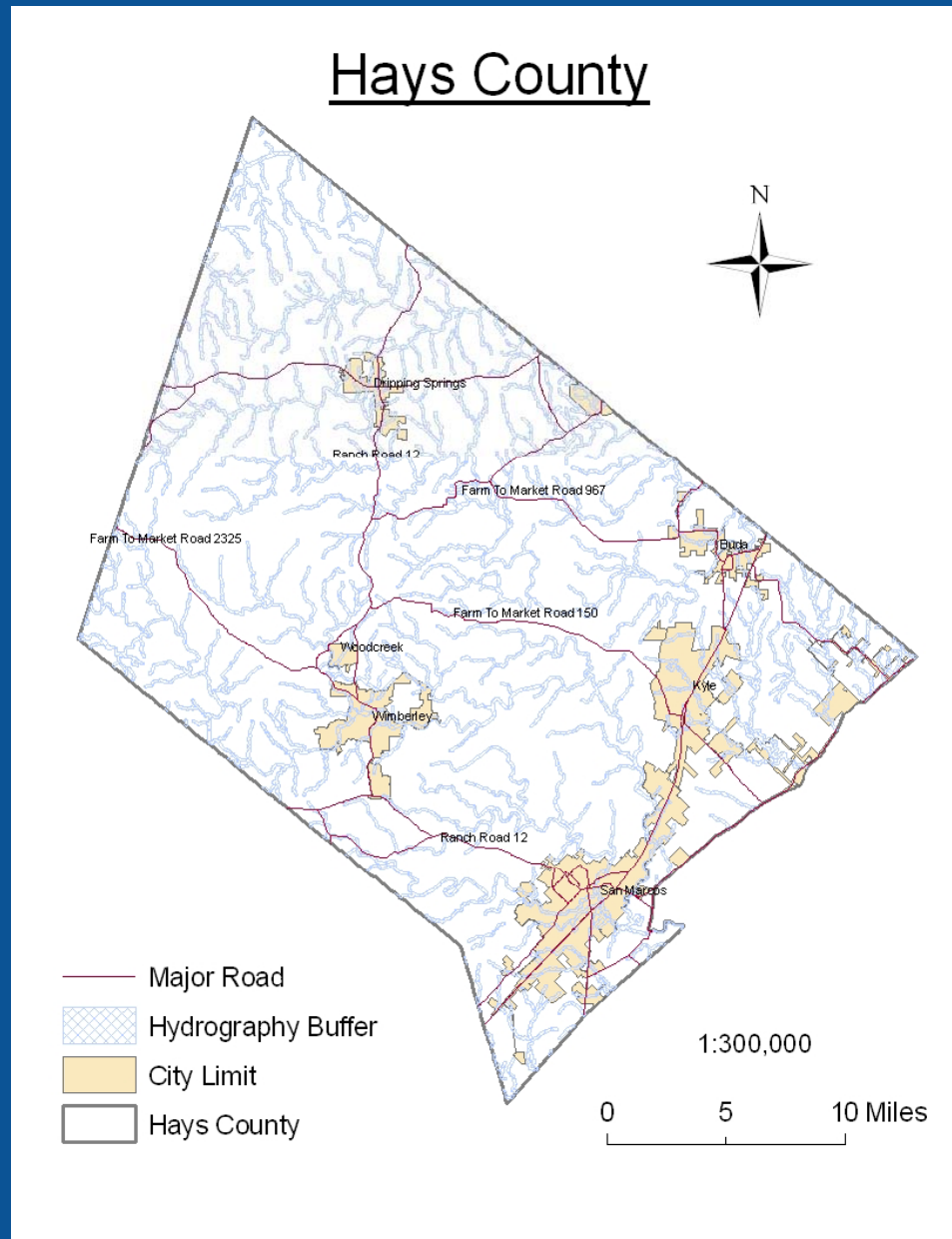
Revised Timeline



Work Completed

- Data collection & organization
- Data processing & analysis
 - GIS model utilized
 - Complex (~ 121 processes)
- Preliminary test maps
- Website construction begun

Preliminary Static Map



Challenges

- Complete hydrography layer not consistent in portrayal of water features
 - Derived from TXDoT maps
- Digitized multiple line segments to represent a feature
 - No network connectivity between segments
 - Some features illustrated as single lines, but others are depicted with double lines

Work in Progress

- Data interpretation for analysis results, including area calculations
- Website construction
- Interactive web GIS (Manifold software)
- Metadata tutorials

Work Remaining

- Static maps for each of 17 counties, including acreage removed by buffers
- Metadata creation & updating
- Website construction & updating
- Interactive web GIS (Manifold software) for 6 counties: Hays, Comal, Blanco, Kendall, Bandera, & Medina.
- Completion of final deliverables - May 11, 2009

Final Deliverables

- Final Report
- Project website access
- Static Maps (17 counties)
- Web GIS (6 counties)
- Poster highlighting analyses and results
- CD containing
 - Data
 - Metadata
 - Reports
 - Digital image of poster
 - Presentations
 - Instructions for CD access - readme file

Conclusion

- Project progress occurring in steady, timely manner
- Faced challenges in processing hydrography data, but worked through those issues
- Currently on target and do not foresee any other major problems arising
- Remaining stages will focus on:
 - cartographic output - creation of maps (static and Web GIS)
 - website related material
 - finalizing deliverables

Contact Info

Katherine Grobe
kg1138@txstate.edu

Project Manager

Phillicia Phillips
pp36575@txstate.edu

Assistant PM / GIS Analyst

Amon Clack
ac1517@txstate.edu

GIS / Web GIS Analyst

Kyle Furtwangler
kf1169@txstate.edu

Webmaster / Analyst