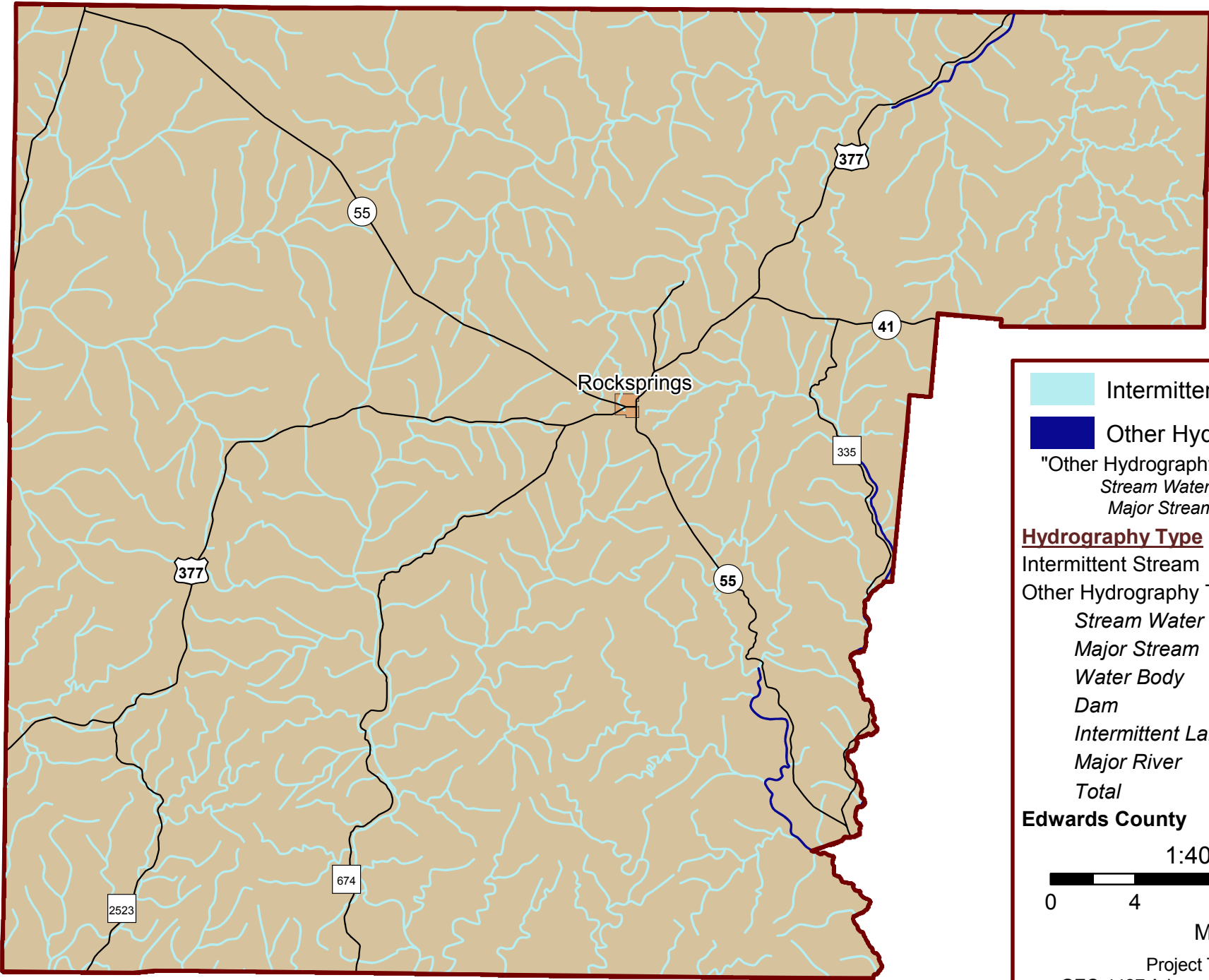
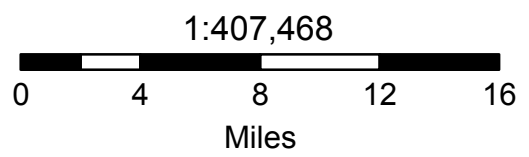


Edwards County Buffered Hydrography



Intermittent Hydrography
 Other Hydrography Types
 "Other Hydrography Types" includes:
*Stream Water Body, Major River,
 Major Stream, Water Body, Dam*

<u>Hydrography Type</u>	<u>Acres</u>
Intermittent Stream	1,159,041
Other Hydrography Types:	
<i>Stream Water Body</i>	19,692
<i>Major Stream</i>	12,491
<i>Water Body</i>	0
<i>Dam</i>	0
<i>Intermittent Lake</i>	0
<i>Major River</i>	0
<i>Total</i>	32,183
Edwards County	13,566,468



Project Team: PAKK
 GEO 4427 Advanced GIS II - Spring 2009
 April 27, 2009