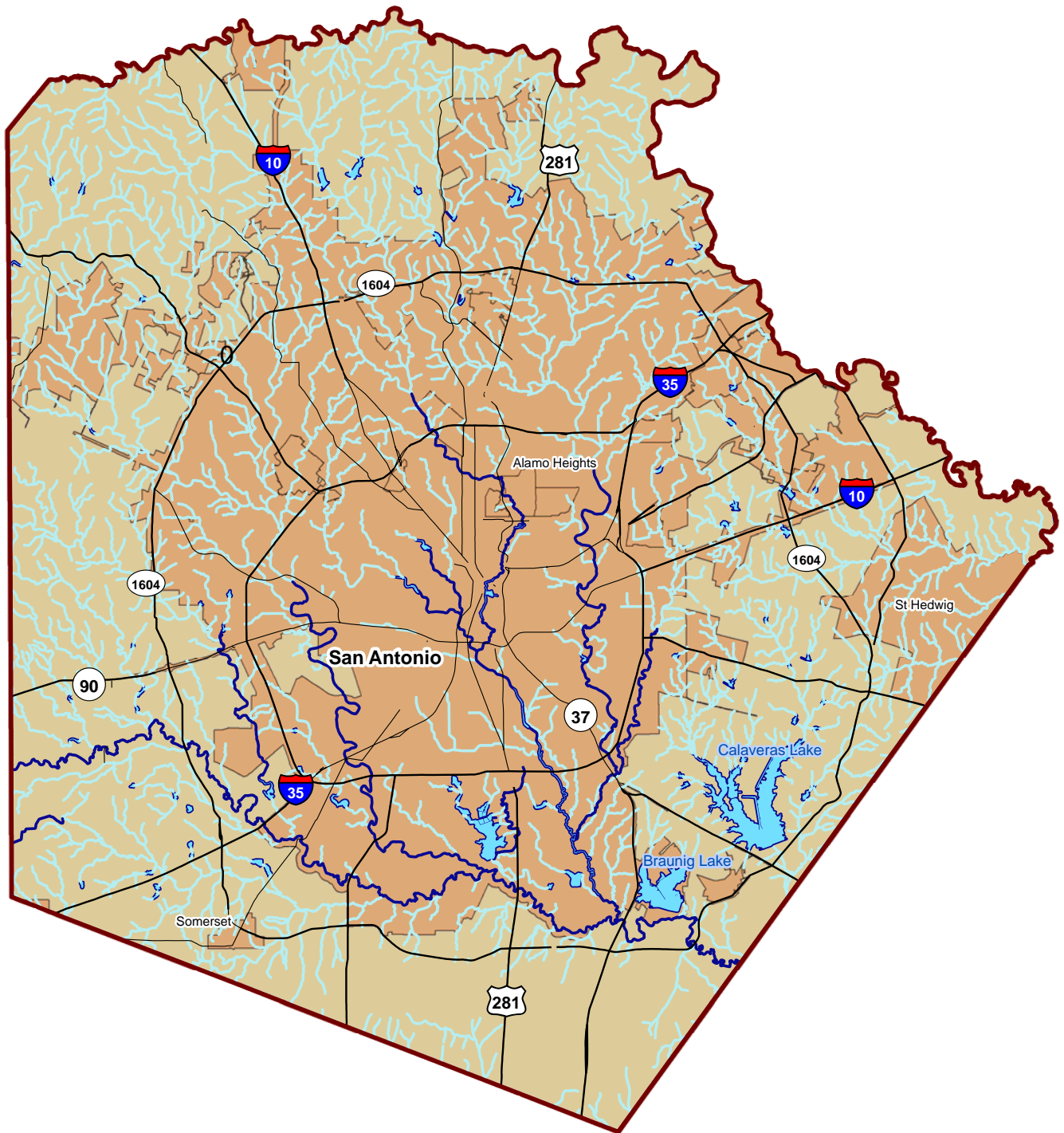


Bexar County Buffered Hydrography



Hydrography Type	Acres
Intermittent Stream	1,267,074
Other Hydrography Types	
Stream Water Body	89,083
Water Body	86,730
Major Stream	45,684
Dam	6,900
Intermittent Lake	0
Major River	0
Total	228,397
Bexar County	8,040,466

Project Team: PAKK
 GEO 4427 Advanced GIS II - Spring 2009
 April 27, 2009

1:384,300



- Intermittent Streams
- Other Hydrography Types

"Other Hydrography Types" includes:
 Stream Water Body, Major River,
 Major Stream, Water Body, Dam