

W. E. T.

Water Elevation Technologies

David Lynch
Project Manager

Miriam Mosher
GIS Analyst



Jeff Gravett
GIS Analyst

Clinton Buehring
GIS Analyst



Status Report:

*Analysis of Costs Associated with
Obtaining Elevation Certificates
for Low-Income Households in San
Marcos, Texas*

Summary

- No changes to scope, purpose, or material delivered
- Slightly (about a week) behind schedule, but this should be made up by the end of the project.
- All deliverables promised by May 4, 2007 should be on-time.

Timeline

Week of:	Jan	February				March				April					
	29	5	12	19	26	5	12	19	26	2	9	16	23	30	
Data Collection / Acquisition	Actual	Actual	Actual	Actual			Spring Break								
Data Pre-Processing			Actual	Actual	Actual	Actual			Actual	Actual	Scheduled				
Analysis						Actual			Actual	Actual	Actual	Scheduled			
Web Site						Scheduled			Actual	Actual	Actual	Scheduled	Scheduled	Scheduled	Scheduled
Metadata						Scheduled			Actual	Actual	Actual	Scheduled	Scheduled		
Interpretation											Actual	Scheduled	Scheduled	Scheduled	
Deliverables												Scheduled	Scheduled	Scheduled	Scheduled

Scheduled	Work Not Scheduled
Actual	Scheduled, but no work

Budget

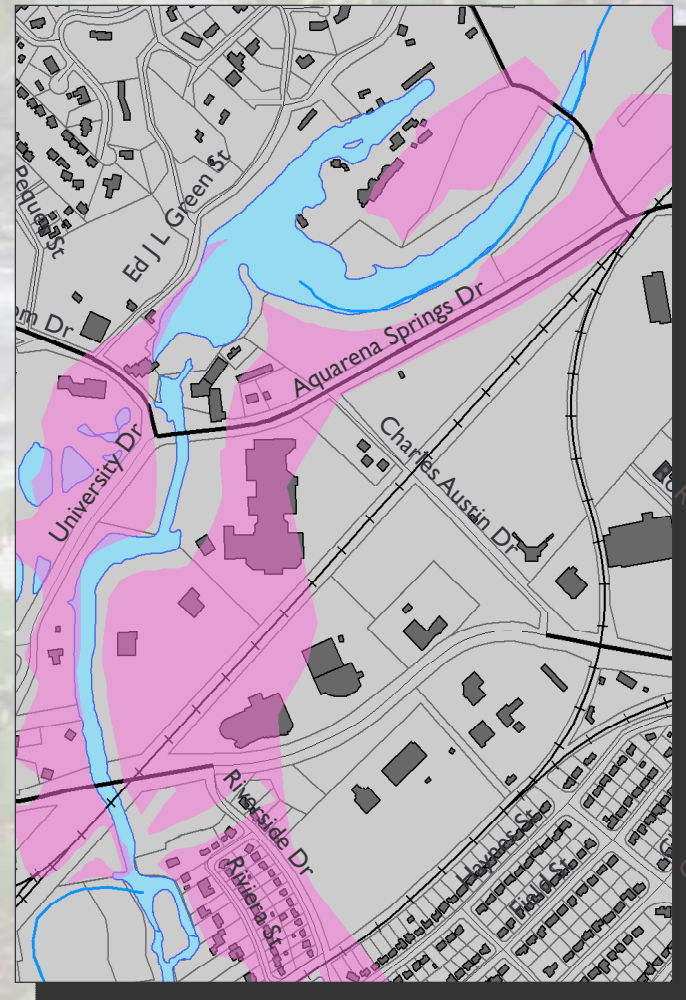
- Total \$25,000
 - Personnel: \$21,000
 - 3 Analysts \times 12 weeks \times 10 hours/week \times \$40/hour = \$14,400
 - 1 Project Leader \times 12 weeks \times 10 hours/week \times \$55/hour = \$6,600
 - Miscellaneous \$4,000
 - Office supplies & printing \$1,000
 - Computer maintenance & repair \$1,000
 - Contingency \$2,000

Modified Data

- 485505 Historical Claims 043006.xls
 - Addresses modified to match parcel data exactly, where possible
- 485505 Active Policies 043006.xls
 - Addresses modified to match parcel data exactly, where possible
- Elevation_Certificate2.shp
 - Modified from Elevation Certificate.shp; addresses modified to match AddressPoints.shp attributes.

Created Data

- 1998 outside floodplain.shp
 - Contains areas outside the floodplain inundated in the flood of October, 1998. Polygon file created by digitizing the CADD file gpsfm98.dwg.



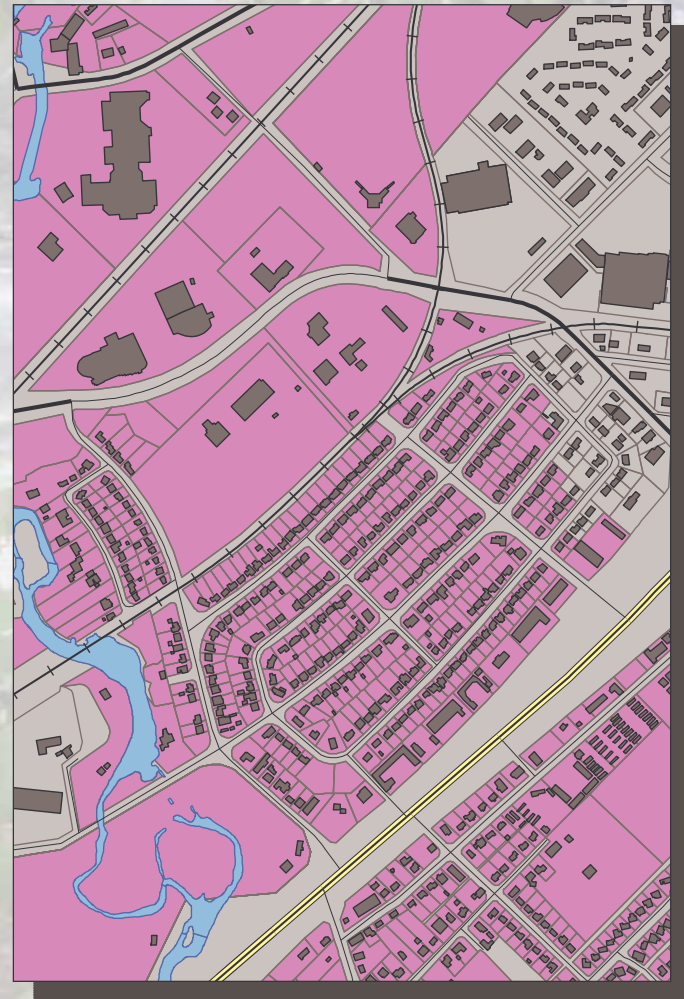
Created Data

- Active Policies.lyr
 - Layer containing the subset of Parcels.shp with active flood insurance policies. Polygon file created by attribute join.



Created Data

- Parcels in 500-yr floodplain.lyr
 - Layer containing the subset of Parcels.shp in the polygon defined by Flood_500yr.shp. Polygon file created by spatial join.



Created Data

- Parcels with Elevation Certificates.shp
 - Shapefile containing parcels with elevation certificates. Polygon file created by exporting the result of a spatial join between the points in Elevation_Certificates.shp and Parcels.shp.



Remaining Work

- Finish creation of shapefiles/layers using different spatial and income criteria.
- Complete metadata
- Complete web site
- Mapping
- Parcel counts and cost estimates
- Final report

Deliverables

- Final Report (2 copies; paper)
- Poster for Display
- All data used or created
- Website
- CD containing the following: (2 copies)
 - Data provided (as modified during the pre-processing phase)
 - Data generated as the result of analysis
 - Metadata
 - Electronic copy of Final Report in MS Word format.
 - Electronic copy of Poster for Display
 - PowerPoint Presentation
 - “Readme” directions on use of the CD

Participation

- Clinton Buehring
 - GIS Analyst
 - Proposal: Summary, Purpose, Conclusions, Participation
 - Project: Contact for Surveyors & Insurance, Data Editing & Analysis
- Jeff Gravett
 - GIS Analyst
 - Proposal: Data
 - Project: Data Editing & Analysis
- David Lynch
 - Project Manager, Webmaster
 - Proposal: Methodology, Budget, Timetable, Final Deliverables
 - Project: Web Site, Development of Block Grant, Data Editing & Analysis, Status Report
- Miriam Mosher
 - GIS Analyst
 - Proposal: Scope, Implications, References
 - Project: Metadata, Income Data, Data Editing & Analysis, 3D Mapping