



Progress Report

JASON HINOJOSA- GIS & REMOTE SENSING ANALYST

NELIRALDA DA SILVA- GIS ANALYST & WEB DEVELOPER

Introduction

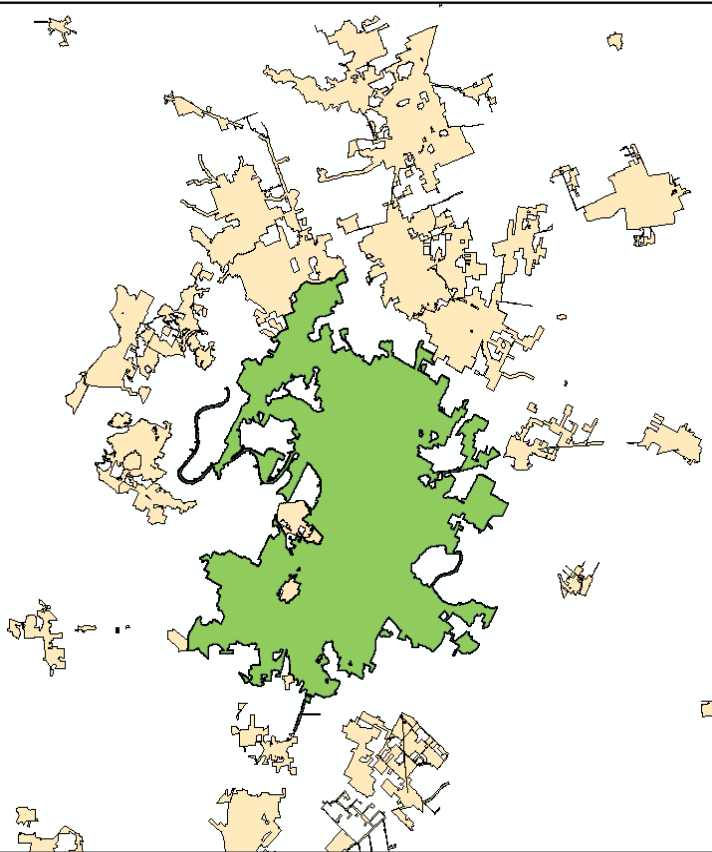
- **Our project:** determine the tree canopy shade index over the trails and how it relates with parks, neighborhoods, and watersheds.

- **Previously Proposed work:**
 - ❖ **Study area:** Austin City Limits and Extra Territorial Jurisdiction.
 - ❖ **Tree canopy:** Create a buffer for the canopy layer by 20 feet to determine the area that provides shade for the trails.
 - ❖ **Trails** would be divided into smaller 200ft segments with the grid available.

Project Changes

- **Study area:** Extra Territorial Jurisdiction will not be included as the boundary for the study area and Austin City Limits will remain the main focus area.
- **Tree canopy:** tree canopy will not be buffered because of the limited processing power available and the time line given.
(what will be done instead?)
- **Trails** will no longer be divided up with the 200ft grid because it does not equally divide the segments.
- **Scope increase:** the creeks layer are now included in the project for analysis.

Work Completed

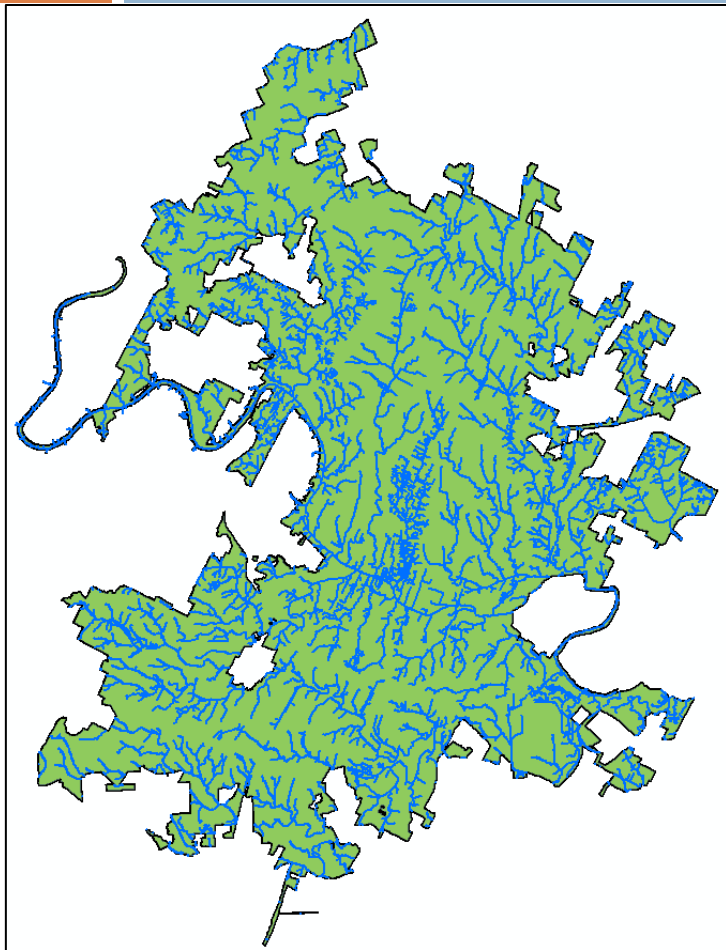


City Limits of Austin selection (CLA)

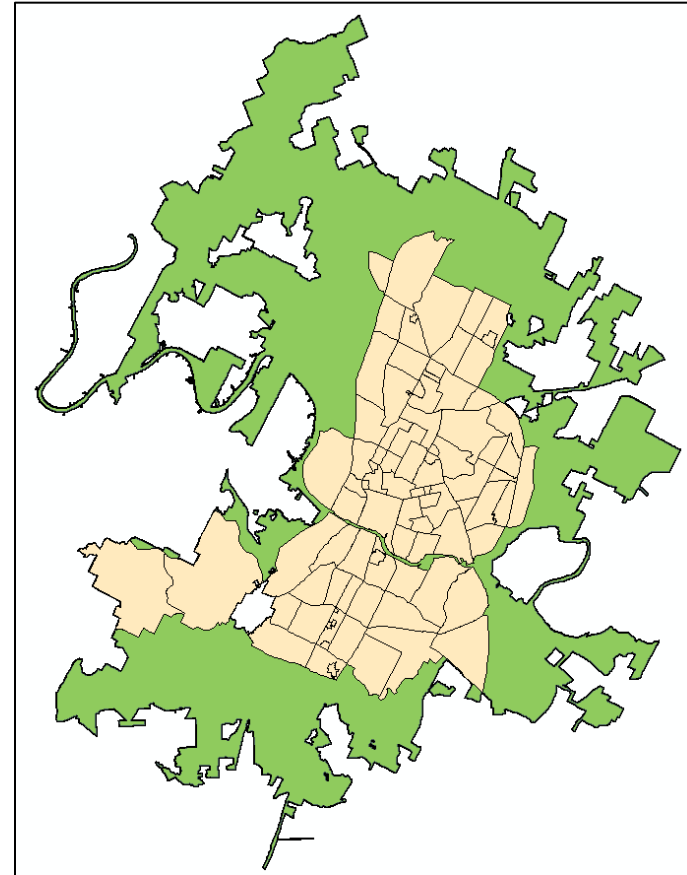


Clipped trails within the CLA

Work Completed

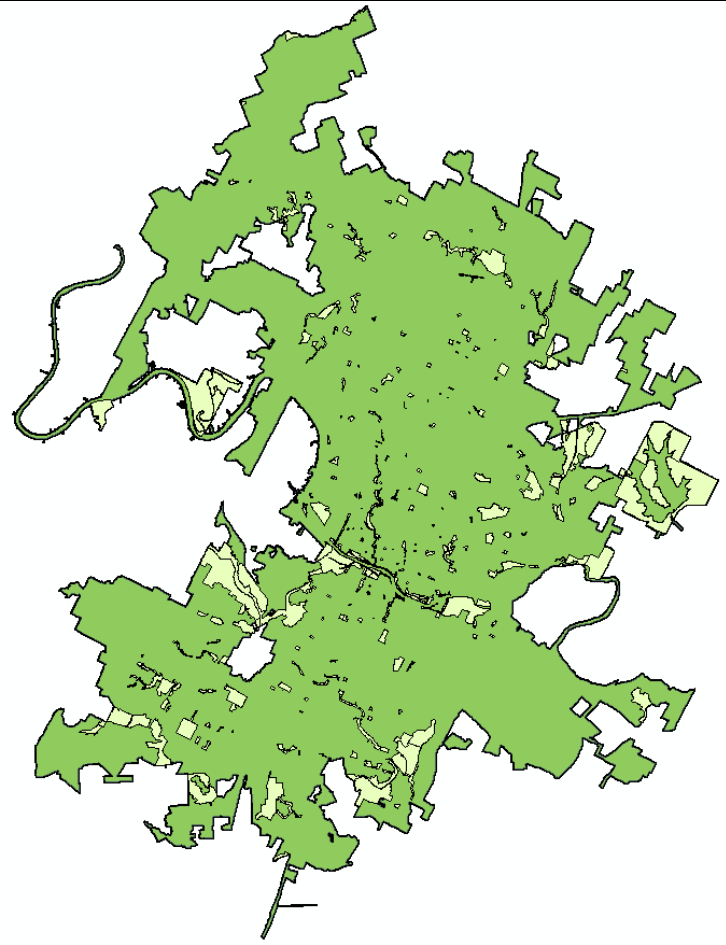


Clipped creeks to CLA

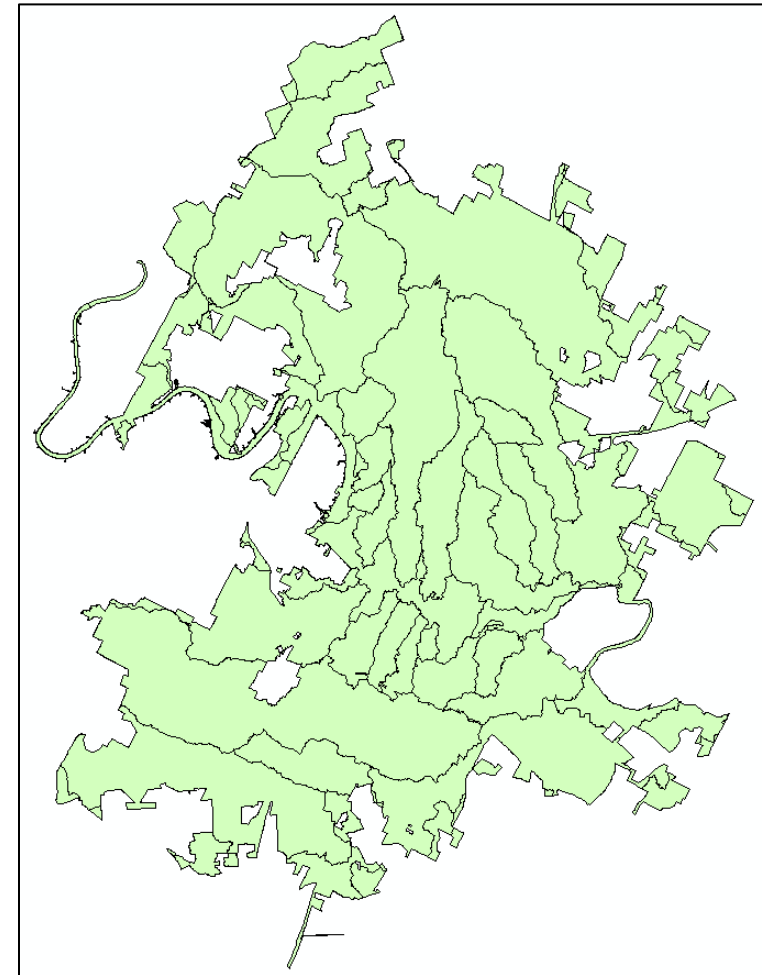


Neighborhood intersection with ACL

Work completed

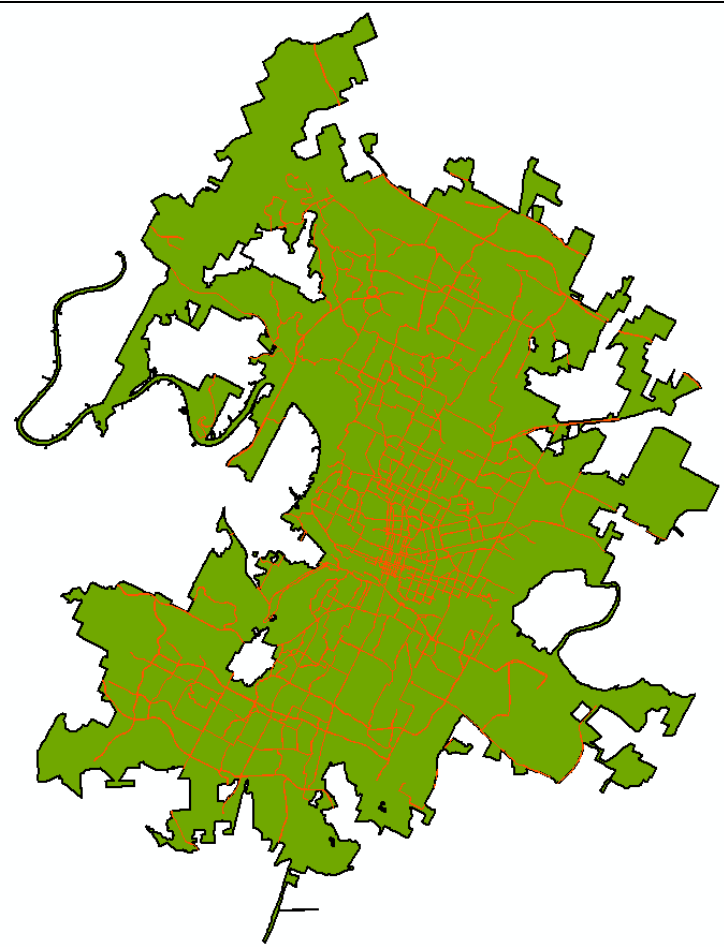


Parks intersection with CLA

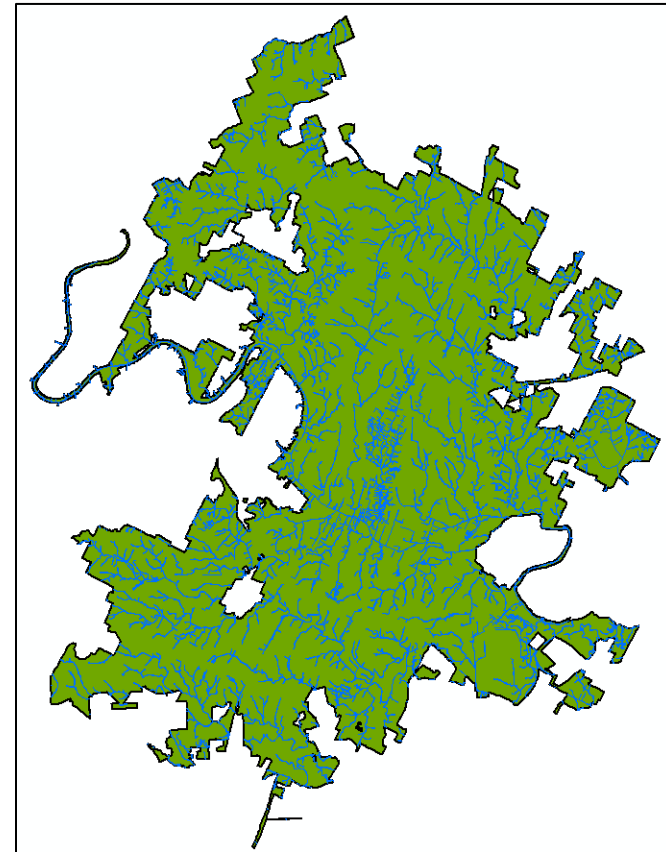


Watershed intersection with CLA

Work completed



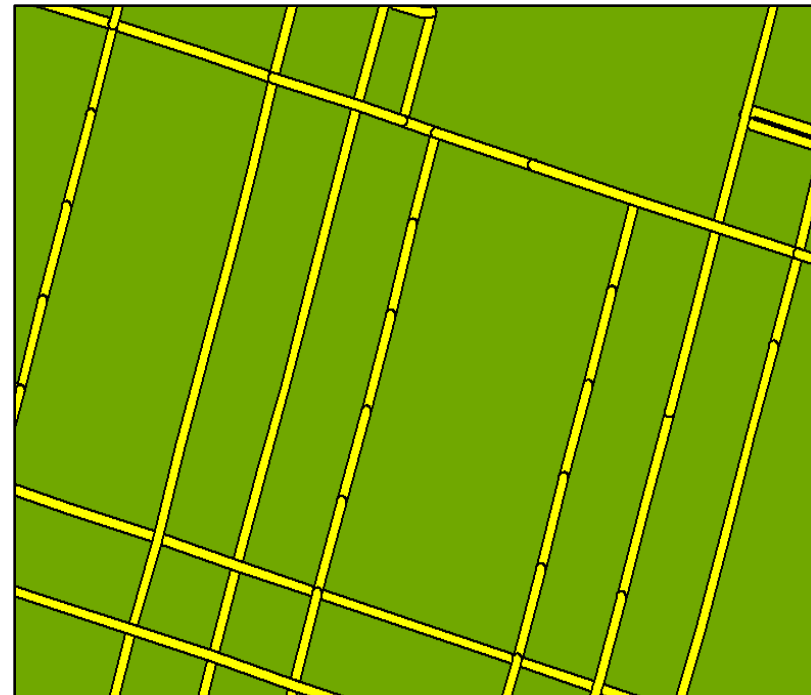
Buffered Trails



Buffered Creeks

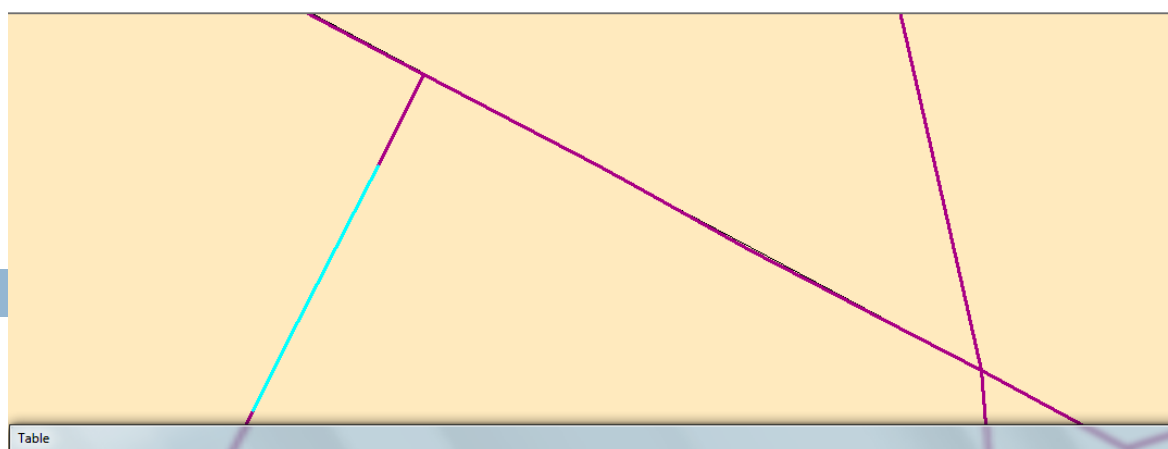
Work in progress

- **Trails:** Decide how to divide it into equal distance of one eighth of a mile using X-Tools software.
- **Creeks:** determine how to segment it into equal lengths
- Clip the buffered layer from the canopy



Trails Segments

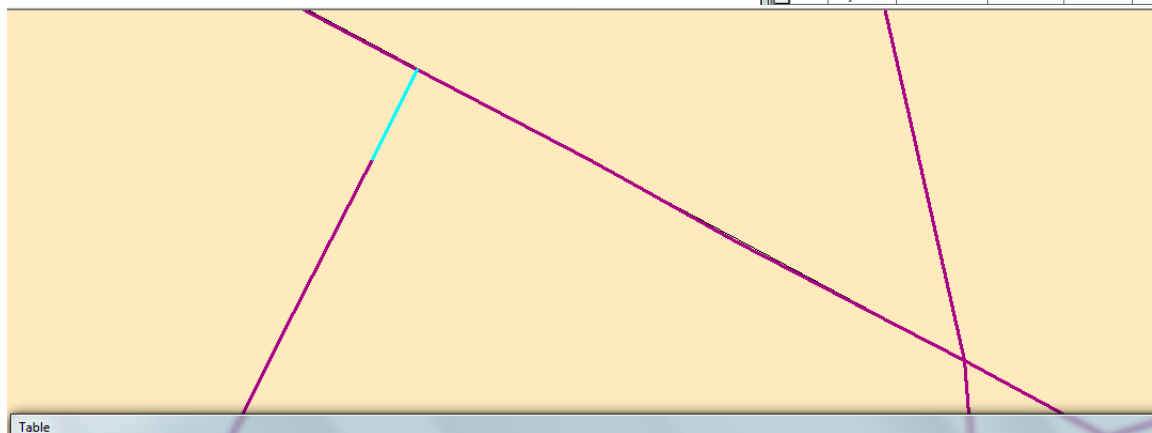
Work in progress



Table

Trails_polyline_split

FID	Shape *	OBJECTID_1	OBJECTID	PRE_DIR	STR_NAME	STR_TYPE	SHAPE_LENG	SHAPE_LE_1	SHAPE_Le_2	Shape_Le_3	ID	Length
0	Polyline	1	29	W	51ST	ST	7594.466545	1.438346	2994.98067	2994.980676	0	354.980676
1	Polyline	1	29	W	51ST	ST	7594.466545	1.438346	2994.98067	2994.980676	0	660
2	Polyline	1	29	W	51ST	ST	7594.466545	1.438346	2994.98067	2994.980676	0	660
3	Polyline	1	29	W	51ST	ST	7594.466545	1.438346	2994.98067	2994.980676	0	660
4	Polyline	1	29	W	51ST	ST	7594.466545	1.438346	2994.98067	2994.980676	0	660
5	Polyline	2	30		BULL CREEK	RD	7503.396513	1.421098	7503.396513	7503.396527	1	243.396527
6	Polyline	2	30		BULL CREEK	RD	7503.396513	1.421098	7503.396513	7503.396527	1	660
7	Polyline	2	30		BULL CREEK	RD	7503.396513	1.421098	7503.396513	7503.396527	1	660
8	Polyline	2	30		BULL CREEK	RD	7503.396513	1.421098	7503.396513	7503.396527	1	660
9	Polyline	2	30		BULL CREEK	RD	7503.396513	1.421098	7503.396513	7503.396527	1	660
10	Polyline	2	30		BULL CREEK	RD	7503.396513	1.421098	7503.396513	7503.396527	1	660



Table

Trails_polyline_split

FID	Shape *	OBJECTID_1	OBJECTID	PRE_DIR	STR_NAME	STR_TYPE	SHAPE_LENG	SHAPE_LE_1	SHAPE_Le_2	Shape_Le_3	ID	Length
0	Polyline	1	29	W	51ST	ST	7594.466545	1.438346	2994.98067	2994.980676	0	354.980676
1	Polyline	1	29	W	51ST	ST	7594.466545	1.438346	2994.98067	2994.980676	0	660
2	Polyline	1	29	W	51ST	ST	7594.466545	1.438346	2994.98067	2994.980676	0	660
3	Polyline	1	29	W	51ST	ST	7594.466545	1.438346	2994.98067	2994.980676	0	660
4	Polyline	1	29	W	51ST	ST	7594.466545	1.438346	2994.98067	2994.980676	0	660
5	Polyline	2	30		BULL CREEK	RD	7503.396513	1.421098	7503.396513	7503.396527	1	243.396527
6	Polyline	2	30		BULL CREEK	RD	7503.396513	1.421098	7503.396513	7503.396527	1	660
7	Polyline	2	30		BULL CREEK	RD	7503.396513	1.421098	7503.396513	7503.396527	1	660
8	Polyline	2	30		BULL CREEK	RD	7503.396513	1.421098	7503.396513	7503.396527	1	660

Work to be completed

- Create shade index
- Analyze the relationship of the shade distribution within the Parks, Neighborhoods, and Watersheds.
- CDs with the project data
- Website
- Final report
- Professional Poster

Conclusion

- Work completed puts Austin Urban Trails team on schedule, allowing the team to move forward towards our final analysis.
- Once the team decides on how the trails will be divided and determine how the creeks will be split, the shade index will be created.
- There are not foreseeable constraints that would keep us from producing our final output on the date determined.